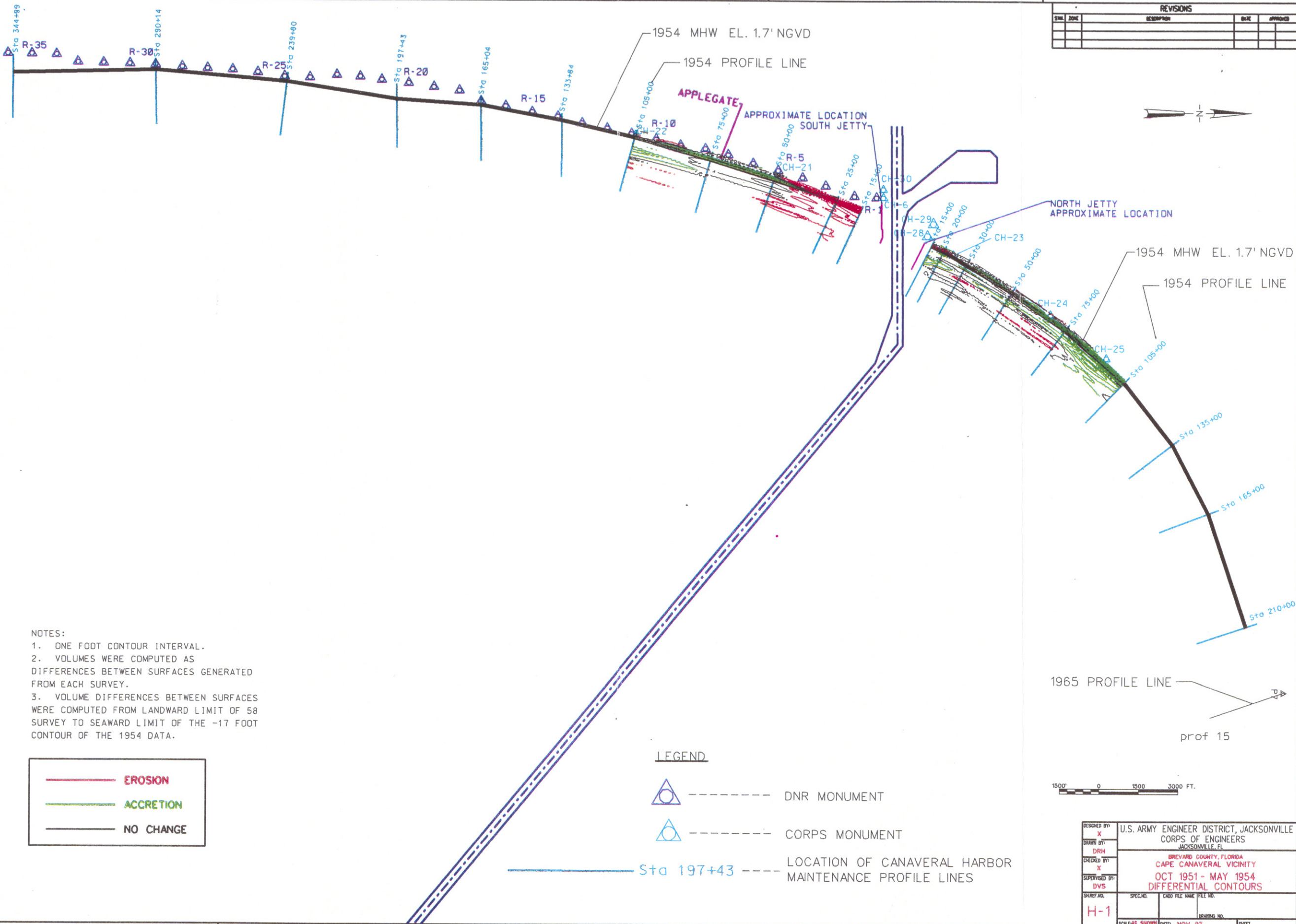


REVISIONS			
NO.	DESCRIPTION	DATE	APPROVED



NOTES:
 1. ONE FOOT CONTOUR INTERVAL.
 2. VOLUMES WERE COMPUTED AS DIFFERENCES BETWEEN SURFACES GENERATED FROM EACH SURVEY.
 3. VOLUME DIFFERENCES BETWEEN SURFACES WERE COMPUTED FROM LANDWARD LIMIT OF 58 SURVEY TO SEAWARD LIMIT OF THE -17 FOOT CONTOUR OF THE 1954 DATA.

	EROSION
	ACCRETION
	NO CHANGE

LEGEND

----- DNR MONUMENT

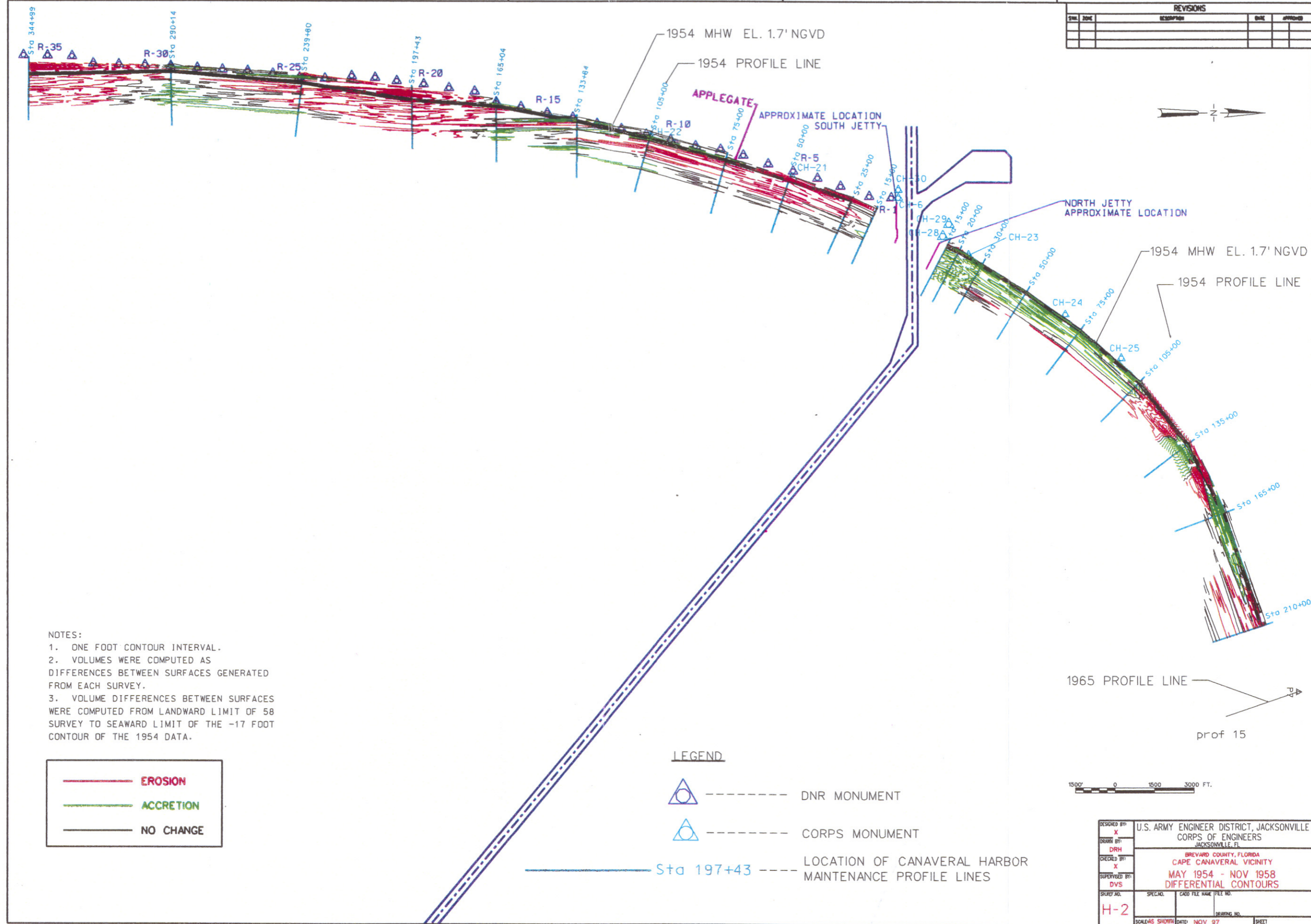
----- CORPS MONUMENT

Sta 197+43 ----- LOCATION OF CANAVERAL HARBOR MAINTENANCE PROFILE LINES



DESIGNED BY: X	U.S. ARMY ENGINEER DISTRICT, JACKSONVILLE CORPS OF ENGINEERS JACKSONVILLE, FL		
DRAWN BY: DRH	BREVARD COUNTY, FLORIDA CAPE CANAVERAL VICINITY		
CHECKED BY: X	OCT 1951 - MAY 1954 DIFFERENTIAL CONTOURS		
SUPERVISED BY: DVS			
SHEET NO. H-1	SPEC. NO.	CADD FILE NAME	FILE NO.
SCALE(S) SHOWN	DATE: NOV 97	DRAWING NO.	SHEET

REVISIONS			
NO.	DATE	DESCRIPTION	BY



NOTES:
 1. ONE FOOT CONTOUR INTERVAL.
 2. VOLUMES WERE COMPUTED AS DIFFERENCES BETWEEN SURFACES GENERATED FROM EACH SURVEY.
 3. VOLUME DIFFERENCES BETWEEN SURFACES WERE COMPUTED FROM LANDWARD LIMIT OF 58 SURVEY TO SEAWARD LIMIT OF THE -17 FOOT CONTOUR OF THE 1954 DATA.

	EROSION
	ACCRETION
	NO CHANGE

LEGEND

----- DNR MONUMENT

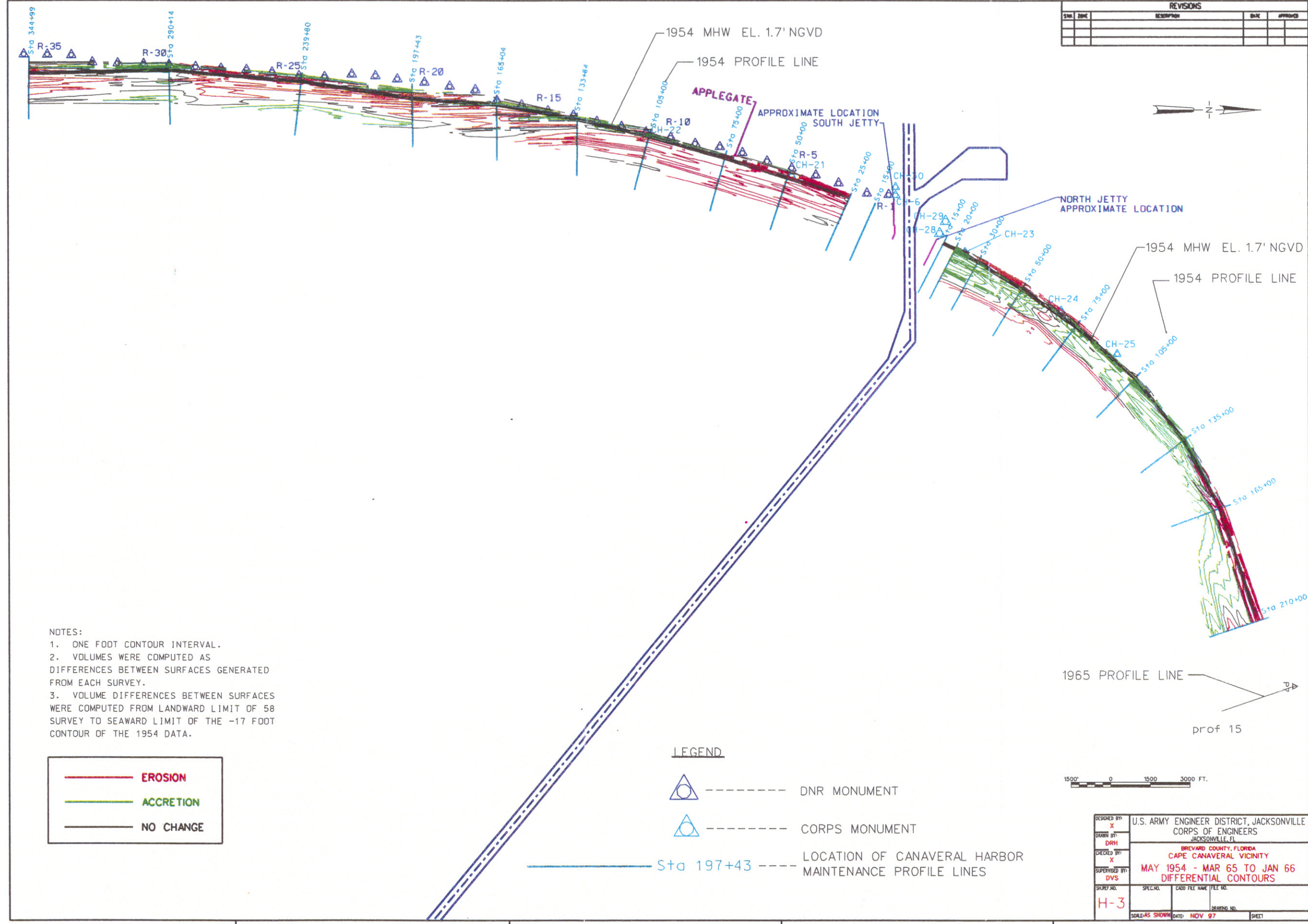
----- CORPS MONUMENT

Sta 197+43 ----- LOCATION OF CANAVERAL HARBOR MAINTENANCE PROFILE LINES



DESIGNED BY: X	U.S. ARMY ENGINEER DISTRICT, JACKSONVILLE CORPS OF ENGINEERS JACKSONVILLE, FL		
DRAWN BY: DRH	BREVARD COUNTY, FLORIDA CAPE CANAVERAL VICINITY		
CHECKED BY: X	MAY 1954 - NOV 1958 DIFFERENTIAL CONTOURS		
SUPERVISED BY: DVS	SPEC. NO.	CADD FILE NAME	FILE NO.
SHEET NO. H-2	SCALE AS SHOWN	DATE: NOV 57	DRAWING NO. SHEET

REVISIONS			
NO.	DATE	DESCRIPTION	APPROVED



NOTES:
 1. ONE FOOT CONTOUR INTERVAL.
 2. VOLUMES WERE COMPUTED AS DIFFERENCES BETWEEN SURFACES GENERATED FROM EACH SURVEY.
 3. VOLUME DIFFERENCES BETWEEN SURFACES WERE COMPUTED FROM LANDWARD LIMIT OF 58 SURVEY TO SEAWARD LIMIT OF THE -17 FOOT CONTOUR OF THE 1954 DATA.

	EROSION
	ACCRETION
	NO CHANGE

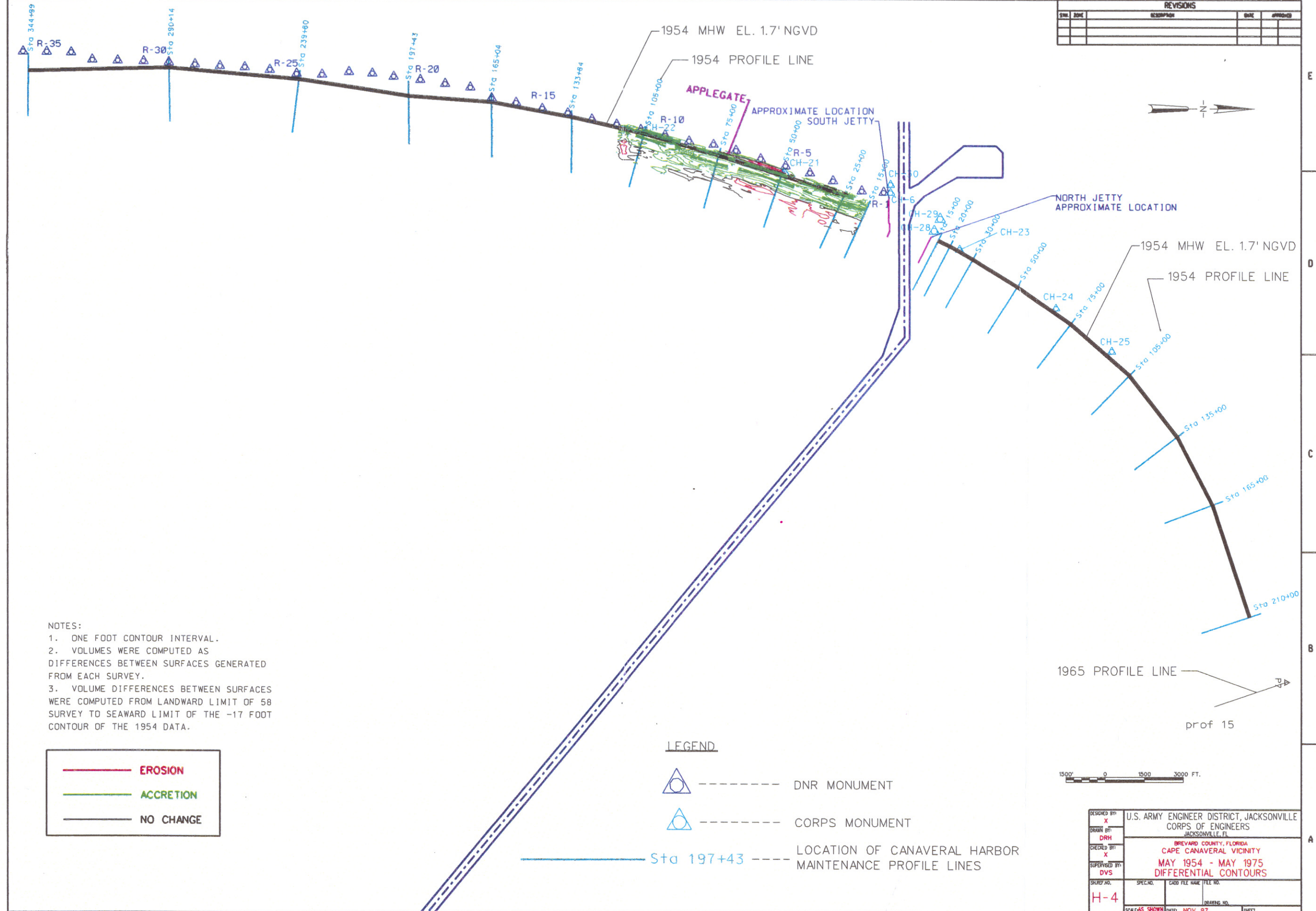
LEGEND

- DNR MONUMENT
- CORPS MONUMENT
- LOCATION OF CANAVERAL HARBOR MAINTENANCE PROFILE LINES

1500' 0 1500 3000 FT.

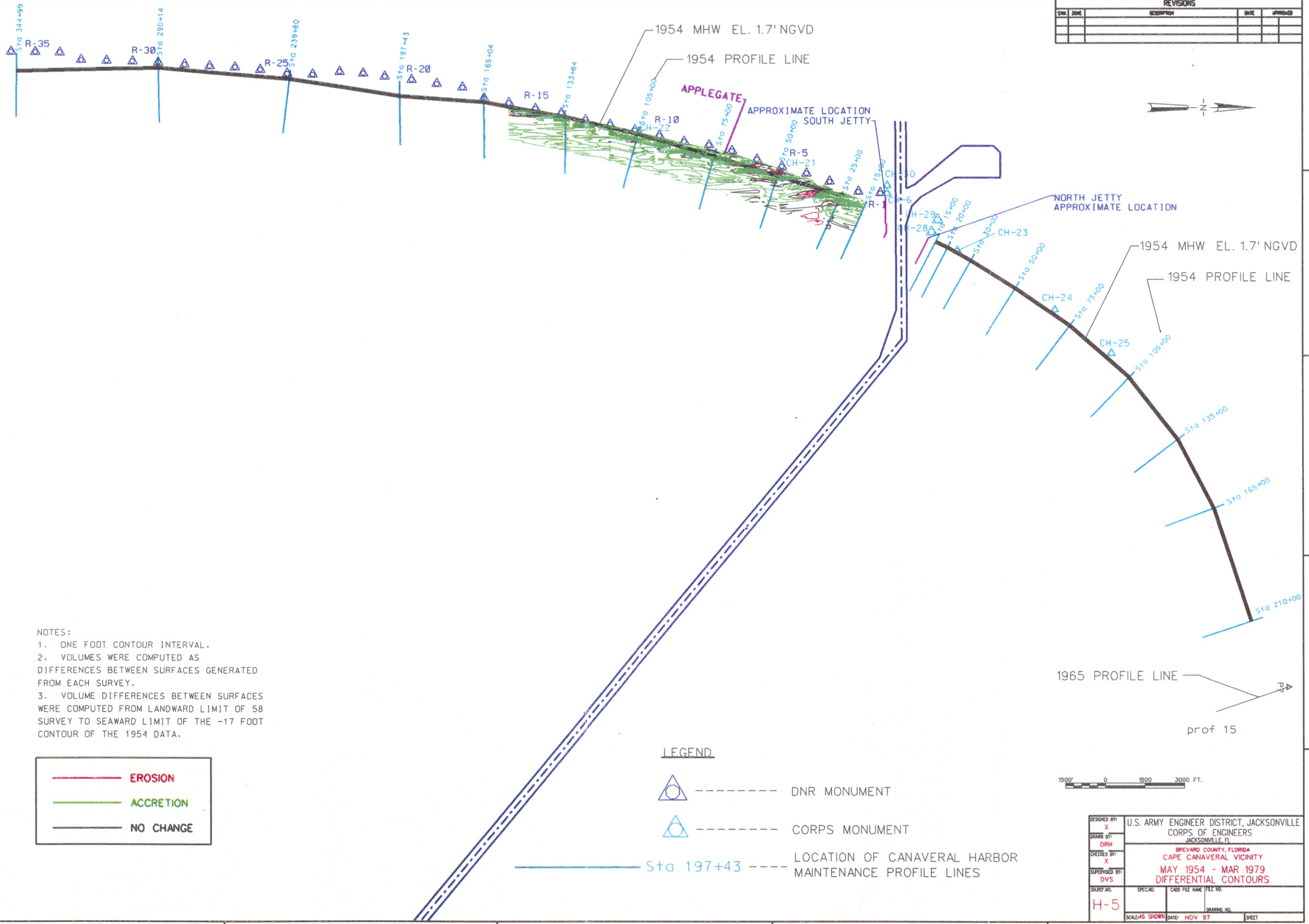
DESIGNED BY X	U.S. ARMY ENGINEER DISTRICT, JACKSONVILLE CORPS OF ENGINEERS JACKSONVILLE, FL		
DRAWN BY DRH	BREVARD COUNTY, FLORIDA CAPE CANAVERAL VICINITY		
CHECKED BY X	MAY 1954 - MAR 65 TO JAN 66 DIFFERENTIAL CONTOURS		
SUPERVISED BY DVS	SPEC. NO.	CARD FILE NAME	FILE NO.
H-3			
SCALE AS SHOWN	DATE: NOV 97	SHEET	

REVISIONS			
NO.	DATE	DESCRIPTION	APPROVED



DESIGNED BY: X	U.S. ARMY ENGINEER DISTRICT, JACKSONVILLE CORPS OF ENGINEERS JACKSONVILLE, FL
DRAWN BY: DRH	
CHECKED BY: X	BREVARD COUNTY, FLORIDA CAPE CANAVERAL VICINITY MAY 1954 - MAY 1975 DIFFERENTIAL CONTOURS
SUPERVISED BY: DVS	
SHARE NO. H-4	SPEC. NO.
SCALE AS SHOWN	DATE: NOV 97
	SHEET

REVISIONS			
NO.	DESCRIPTION	DATE	APPROVED



NOTES:
 1. ONE FOOT CONTOUR INTERVAL.
 2. VOLUMES WERE COMPUTED AS DIFFERENCES BETWEEN SURFACES GENERATED FROM EACH SURVEY.
 3. VOLUME DIFFERENCES BETWEEN SURFACES WERE COMPUTED FROM LANDWARD LIMIT OF 58 SURVEY TO SEAWARD LIMIT OF THE -17 FOOT CONTOUR OF THE 1954 DATA.

	EROSION
	ACCRETION
	NO CHANGE

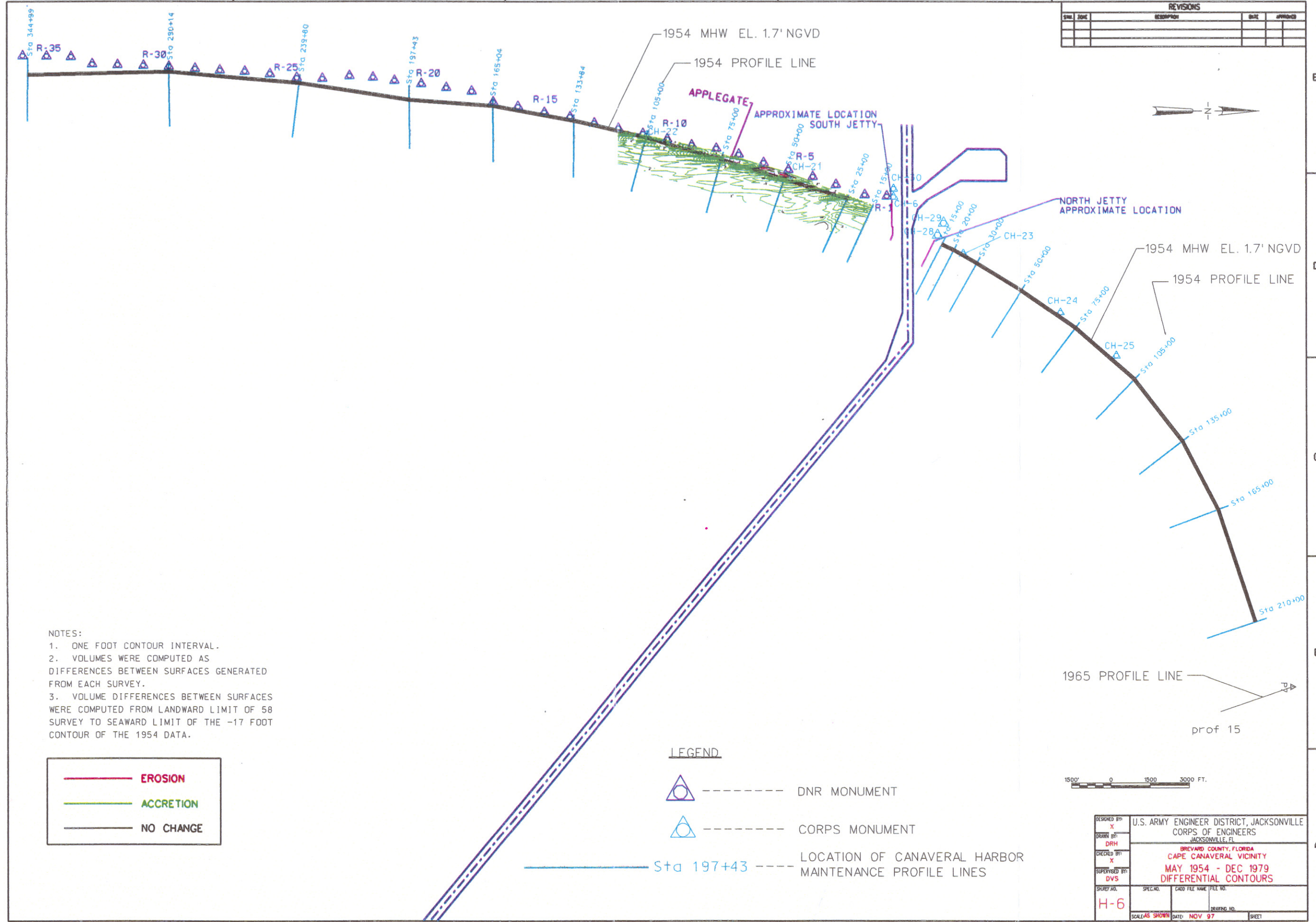
LEGEND

- DNR MONUMENT
- CORPS MONUMENT
- LOCATION OF CANAVERAL HARBOR MAINTENANCE PROFILE LINES



DESIGNED BY: X	U.S. ARMY ENGINEER DISTRICT, JACKSONVILLE CORPS OF ENGINEERS JACKSONVILLE, FL		
DRAWN BY: DRH	BREVARD COUNTY, FLORIDA CAPE CANAVERAL VICINITY		
CHECKED BY: X	MAY 1954 - MAR 1979		
SUPERVISED BY: DVS	DIFFERENTIAL CONTOURS		
SURVEY NO. H-5	SPEC. NO.	CADD FILE NAME (FILE NO.)	DRAWING NO.
SCALE AS SHOWN	DATE: NOV 97	SHEET	

REVISIONS			
NO.	DATE	DESCRIPTION	BY



NOTES:
 1. ONE FOOT CONTOUR INTERVAL.
 2. VOLUMES WERE COMPUTED AS DIFFERENCES BETWEEN SURFACES GENERATED FROM EACH SURVEY.
 3. VOLUME DIFFERENCES BETWEEN SURFACES WERE COMPUTED FROM LANDWARD LIMIT OF 58 SURVEY TO SEAWARD LIMIT OF THE -17 FOOT CONTOUR OF THE 1954 DATA.

	EROSION
	ACCRETION
	NO CHANGE

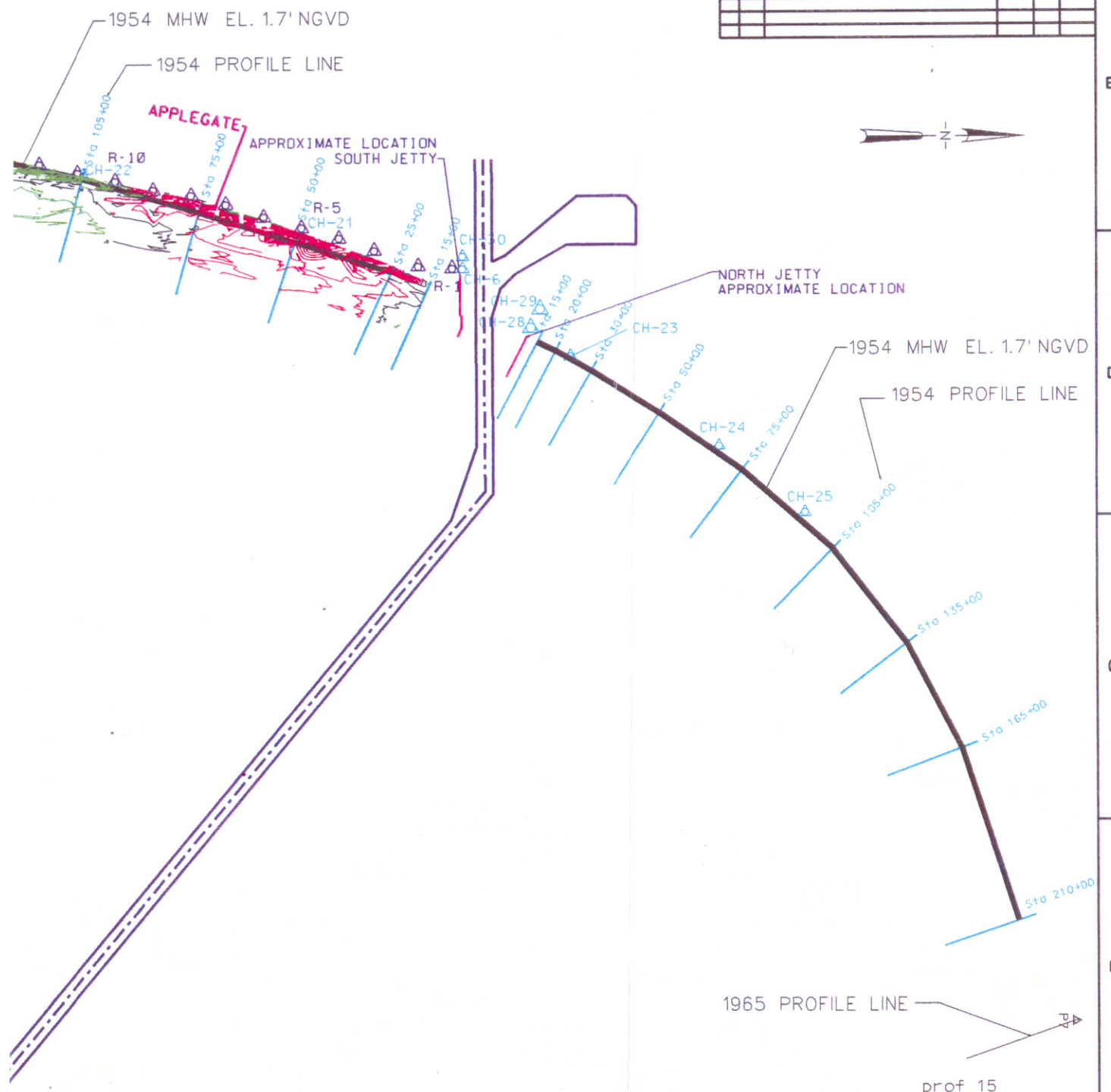
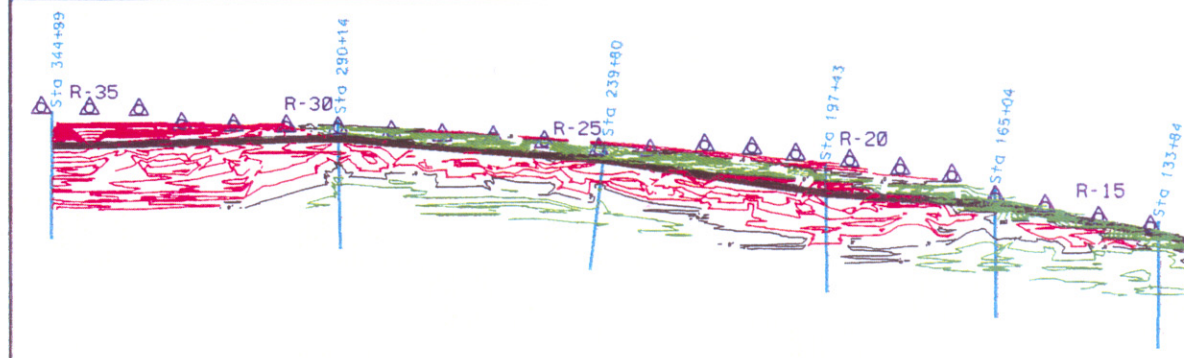
LEGEND

- DNR MONUMENT
- CORPS MONUMENT
- LOCATION OF CANAVERAL HARBOR MAINTENANCE PROFILE LINES



DESIGNED BY: X	U.S. ARMY ENGINEER DISTRICT, JACKSONVILLE		
DRAWN BY: DRH	CORPS OF ENGINEERS		
CHECKED BY: X	BREVARD COUNTY, FLORIDA		
SUPERVISED BY: DVS	CAPE CANAVERAL VICINITY		
SURVEY NO. H-6	SPEC. NO.	CADD FILE NAME	FILE NO.
SCALE AS SHOWN	DATE: NOV 97	SHEET	

REVISIONS			
NO.	DATE	DESCRIPTION	BY



NOTES:
 1. ONE FOOT CONTOUR INTERVAL.
 2. VOLUMES WERE COMPUTED AS DIFFERENCES BETWEEN SURFACES GENERATED FROM EACH SURVEY.
 3. VOLUME DIFFERENCES BETWEEN SURFACES WERE COMPUTED FROM LANDWARD LIMIT OF 58 SURVEY TO SEAWARD LIMIT OF THE -17 FOOT CONTOUR OF THE 1954 DATA.

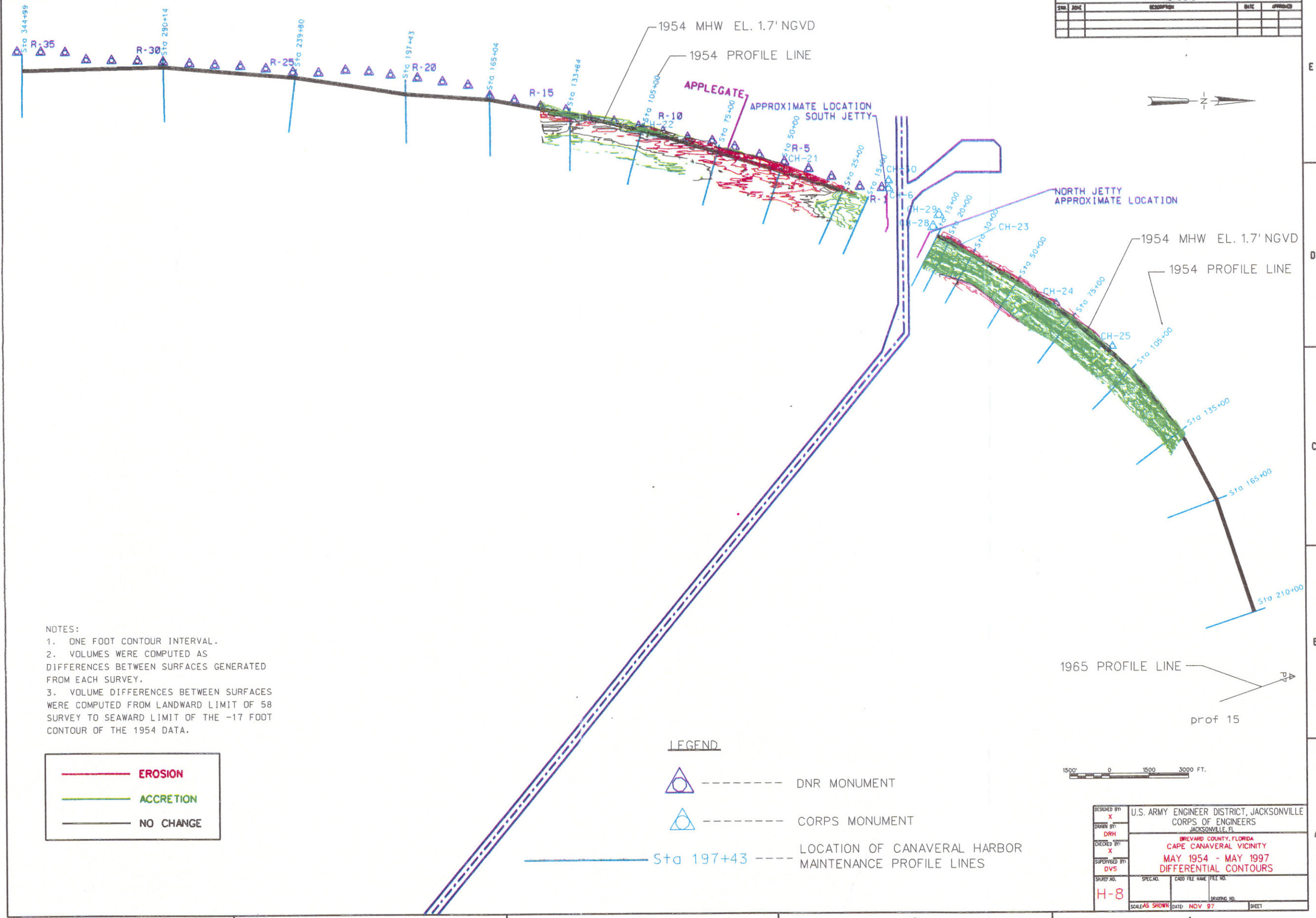
	EROSION
	ACCRETION
	NO CHANGE

LEGEND

- DNR MONUMENT
- CORPS MONUMENT
- LOCATION OF CANAVERAL HARBOR MAINTENANCE PROFILE LINES

DESIGNED BY: X	U.S. ARMY ENGINEER DISTRICT, JACKSONVILLE CORPS OF ENGINEERS JACKSONVILLE, FL		
DRAWN BY: DRH	BREVARD COUNTY, FLORIDA CAPE CANAVERAL VICINITY		
CHECKED BY: X	MAY 1954 - JAN 1994 DIFFERENTIAL CONTOURS		
SUPERVISED BY: DVS	SPEC. NO.	CADD FILE NAME	FILE NO.
SHEET NO. H-7	DATE: NOV 97	DRAWING NO.	SHEET

REVISIONS			
NO.	DATE	DESCRIPTION	APPROVED



NOTES:

1. ONE FOOT CONTOUR INTERVAL.
2. VOLUMES WERE COMPUTED AS DIFFERENCES BETWEEN SURFACES GENERATED FROM EACH SURVEY.
3. VOLUME DIFFERENCES BETWEEN SURFACES WERE COMPUTED FROM LANDWARD LIMIT OF 58 SURVEY TO SEAWARD LIMIT OF THE -17 FOOT CONTOUR OF THE 1954 DATA.

	EROSION
	ACCRETION
	NO CHANGE

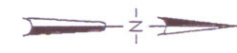
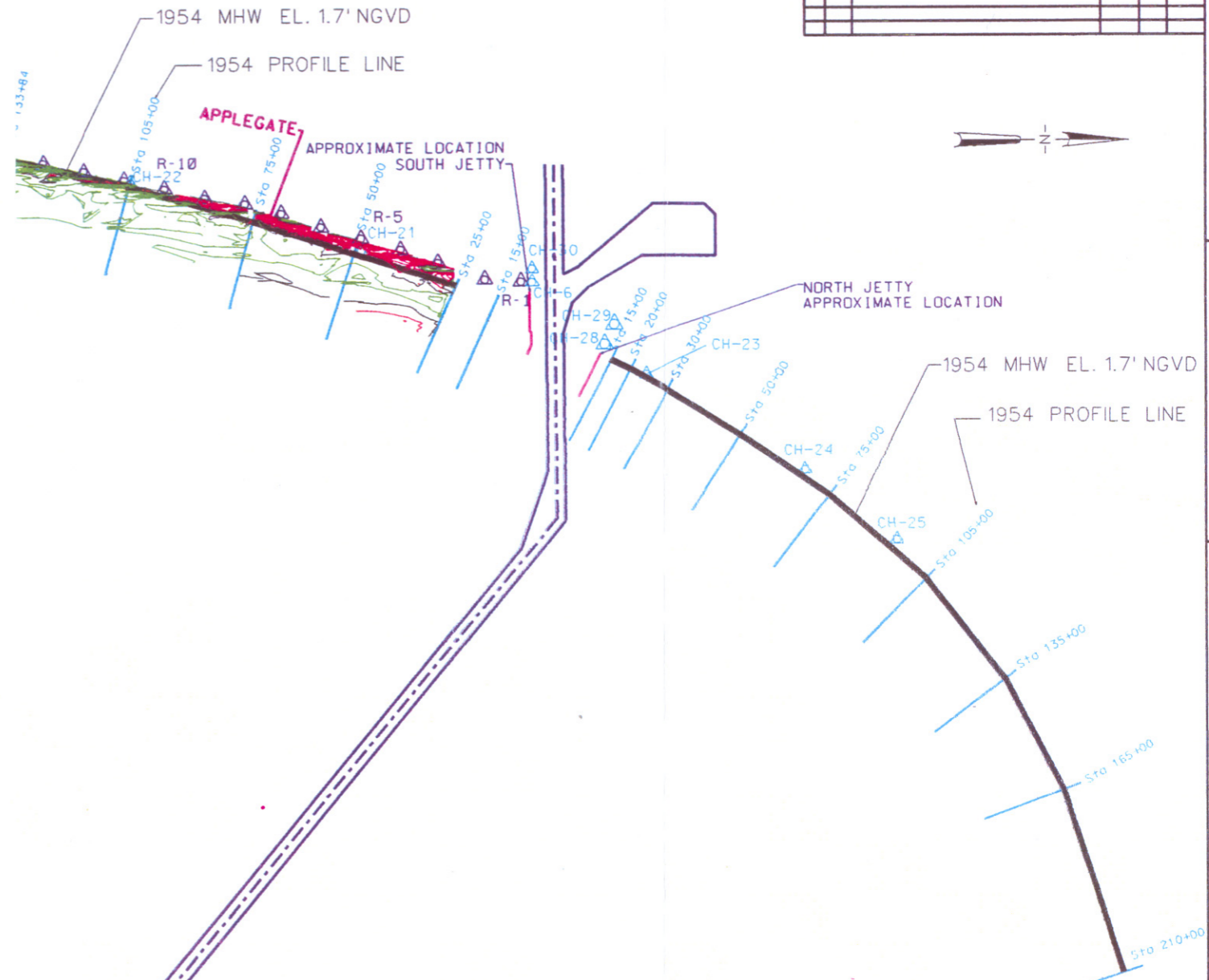
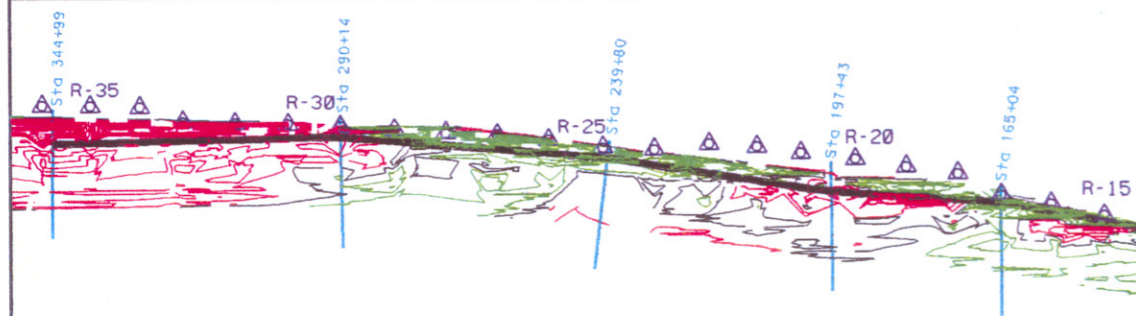
LEGEND

- DNR MONUMENT
- CORPS MONUMENT
- LOCATION OF CANAVERAL HARBOR MAINTENANCE PROFILE LINES



DESIGNED BY: X	U.S. ARMY ENGINEER DISTRICT, JACKSONVILLE CORPS OF ENGINEERS JACKSONVILLE, FL		
DRAWN BY: DRH	BREVARD COUNTY, FLORIDA CAPE CANAVERAL VICINITY		
CHECKED BY: X	MAY 1954 - MAY 1997 DIFFERENTIAL CONTOURS		
SUPERVISED BY: DVS	SCALE NO.	SPEC. NO.	CADD FILE NAME FILE NO.
H-8			
SCALE AS SHOWN	DATE: NOV 97	SHEET	

REVISIONS			
NO.	DESCRIPTION	DATE	APPROVED



- NOTES:
- ONE FOOT CONTOUR INTERVAL.
 - VOLUMES WERE COMPUTED AS DIFFERENCES BETWEEN SURFACES GENERATED FROM EACH SURVEY.
 - VOLUME DIFFERENCES BETWEEN SURFACES WERE COMPUTED FROM LANDWARD LIMIT OF 58 SURVEY TO SEAWARD LIMIT OF THE -17 FOOT CONTOUR OF THE 1954 DATA.

	EROSION
	ACCRETION
	NO CHANGE

LEGEND

DNR MONUMENT

CORPS MONUMENT

Sta 197+43 LOCATION OF CANAVERAL HARBOR MAINTENANCE PROFILE LINES



DESIGNED BY: X	U.S. ARMY ENGINEER DISTRICT, JACKSONVILLE
DRAWN BY: DRH	CORPS OF ENGINEERS
CHECKED BY: X	JACKSONVILLE, FL
SUPERVISED BY: DVS	BREVARD COUNTY, FLORIDA
	CAPE CANAVERAL VICINITY
	MAR 65 TO JAN 66 - JAN 1994
	DIFFERENTIAL CONTOURS
SHEET NO. H-9	DATE NOV 97

REPORT DOCUMENTATION PAGE

Form Approved
OMB No. 0704-0188

Public reporting burden for this collection of information is estimated to average 1 hour per response, including the time for reviewing instructions, searching existing data sources, gathering and maintaining the data needed, and completing and reviewing the collection of information. Send comments regarding this burden estimate or any other aspect of this collection of information, including suggestions for reducing this burden, to Washington Headquarters Services, Directorate for Information Operations and Reports, 1215 Jefferson Davis Highway, Suite 1204, Arlington, VA 22202-4302, and to the Office of Management and Budget, Paperwork Reduction Project (0704-0188), Washington, DC 20503.

1. AGENCY USE ONLY (Leave blank)		2. REPORT DATE April 1999	3. REPORT TYPE AND DATES COVERED Final report	
4. TITLE AND SUBTITLE Coastal Processes Assessment for Brevard County, Florida, with Special Reference to Test Plaintiffs			5. FUNDING NUMBERS	
6. AUTHOR(S) Nicholas C. Kraus, Mark R. Byrnes, Anne-Lise Lindquist				
7. PERFORMING ORGANIZATION NAME(S) AND ADDRESS(ES) U.S. Army Engineer Waterways Experiment Station, 3909 Halls Ferry Road, Vicksburg, MS 39180-6199; Applied Coastal Research and Engineering, Inc., 766 Falmouth Road, Mashpee, MA 02649; Consultant, San Diego, CA			8. PERFORMING ORGANIZATION REPORT NUMBER Technical Report CHL-99-6	
9. SPONSORING/MONITORING AGENCY NAME(S) AND ADDRESS(ES) U.S. Department of Justice Environment and Natural Resources Division Washington, DC 20044-0663			10. SPONSORING/MONITORING AGENCY REPORT NUMBER	
11. SUPPLEMENTARY NOTES Available from National Technical Information Service, 5285 Port Royal Road, Springfield, VA 22161.				
12a. DISTRIBUTION/AVAILABILITY STATEMENT Approved for public release; distribution is unlimited.			12b. DISTRIBUTION CODE	
13. ABSTRACT (Maximum 200 words) This report was prepared as an independent assessment of the coastal physical processes occurring along Brevard County, Florida. The study was conducted for the U.S. Department of Justice, Environment and Natural Resources Division, in its involvement with the lawsuit Applegate et al. versus the United States of America. Long-term regional beach change is evaluated by analysis of survey data on shoreline position, bathymetry, and beach profiles taken through time. In addition, analysis is specifically made for the properties of two test plaintiffs selected by the Court. Estimates of beach and dune erosion, if any, are calculated for the two test plaintiffs from date of purchase of the properties. Erosion of the beaches and dunes, principally attributed to storms, was estimated at the properties of the two test plaintiffs by compiling storm data and calculating beach and dune change with a numerical model.				
14. SUBJECT TERMS Bathymetric change Brevard County Canaveral Harbor Cape Canaveral Coastal processes Down-drift impacts of coastal structures			15. NUMBER OF PAGES 162	
			16. PRICE CODE	
17. SECURITY CLASSIFICATION OF REPORT UNCLASSIFIED	18. SECURITY CLASSIFICATION OF THIS PAGE UNCLASSIFIED	19. SECURITY CLASSIFICATION OF ABSTRACT	20. LIMITATION OF ABSTRACT	