

**EIS
SUB-APPENDIX J
PHASE I ASSESSMENT**

**FINAL
FEASIBILITY REPORT
AND ENVIRONMENTAL IMPACT STATEMENT
PORT EVERGLADES HARBOR NAVIGATION STUDY
BROWARD COUNTY, FLORIDA**

TABLE OF CONTENTS

TITLE	PAGE NO.
1.1 SUMMARY.....	1
1.2 INTRODUCTION	1
1.2.1 Purpose.....	
1.2.2 Special Terms and Conditions	
1.2.3 Limitations and Exceptions of Assessment.....	2
1.2.4 Limiting Conditions and Methodology Used	2
1.3 SITE DESCRIPTION	
1.3.1 Vegetation	2
1.3.2 Soils	2
1.3.3 Location and Legal Description	2
1.3.4 Descriptions of Structures, Roads, Other improvements, on the Site (including heating/cooling system, sewage disposal, source of potable water)	3
1.3.5 Information (if any) Reported by Use Regarding Environmental Liens or Specialized Knowledge and Experience	3
1.3.6 Current Uses of the Property	3
1.3.7 Past Uses of the Property (to the Extent identified)	3
1.3.8 Current and Past Uses of Adjoining Properties(to the extent identified)	4
1.3.9 Site Rendering, Map, or Site Plan .	4
1.4 RECORDS REVIEW	
1.4.1 Standard Environmental Records Sources, Federal and State.....	4
1.4.2 Physical Setting Sources(s).....	5
1.4.3 Historical Use Information	5
1.4.4 Additional Record Sources.....	5

TABLE OF CONTENTS
(Cont'd)

1.5 INFORMATION FROM SITE RECONNAISSANCE AND INTERVIEWS

1.5.1 Hazardous Substances in Connection with Identified Uses (including storage, handling, disposal...,	6
1.5.2 Hazardous Substance Containers and Unidentified Substance Containers (including storage, handling, disposal).....	6
1.5.3 Storage Tanks (including contents and assessment of leakage or potential for leakage).....	6
1.5.4 Indications of PCBs (including how confined and assessment of leakage or potential for leakage)...	6
1.5.5 Indications of Solid waste Disposal.....	6
1.5.6 Physical Setting Analysis, if migrating Hazardous Substances are an issue.....	7
1.5.7 Any Other Conditions of Concern.....	7

1.6 FINDINGS AND CONCLUSIONS	7
------------------------------------	---

Preliminary Assessment Screening (PAS) Summation

PAS Statement of Findings

1.7 APPENDICES:

Site Location Map.....	A1
Aerial Photograph of Site	A2
Aerial Photograph of Site	A3
Port Everglades Hazardous and Toxic Waste Database Review.....	A4
Groundwater Data.....	A5

1.1 SUMMARY

A preliminary site assessment was conducted of the site of the proposed Port Everglades expansion and deepening. As the areas considered for project deepening no longer include any upland disposal sites located adjacent to, or nearby the Port Everglades, the task was simplified. The hazardous and toxic waste evaluation revealed that the deepening event is in the vicinity of industrial facilities, ad hoc warehouse or storage areas, and petroleum storage facilities, but none of these areas are to be directly impacted. The report also provides documentation of numerous small spills which are not unusual for a busy port area. Likely through dilutions, actual cleanup remedial actions, and tidal currents pushing out the entrance all the residual effects have been weathered and eliminated. The material proposed for dredging will be evaluated for the suitability for ocean disposal in the Ocean Dredged Material Disposal Site and that will be the final test of the contamination of the material. The testing may include sediment chemistry as well as bioassays. It is very unlikely that any significant contamination lingers. This report updates previous versions which included upland disposals areas which are no longer considered for economic reasons and/or because they were in fact contaminated.

1.2 INTRODUCTION

1.2.1 Purpose The goal of this site investigation is to identify recognized environmental conditions. ER 1165-2-162 requires a complete evaluation of the potential for contamination as part of the Civil Works study process. The investigation indicates the presence or likely presence of any hazardous substances or petroleum products. The investigation attempts to reveal conditions that indicate an existing release, a past release, or a material threat of a release of any hazardous substances or petroleum products on the adjacent properties, or into the ground, groundwater, or surface water of the project area.

1.2.2 Special Terms and Conditions The recognized environmental conditions that were considered throughout this investigation included hazardous substances or petroleum products in compliance with laws. The term, environmental contamination is not intended to include de minimus conditions that generally do not present a material risk of harm to public health or the environment and that generally would not be the subject of an enforcement action if brought to the attention of appropriate governmental agencies.

1.2.3 Limitations and Exceptions of Assessment This Phase I Environmental Site Assessment normally is composed of the following five components: 1) Records Review, 2) Aerial Photography Study, Mr. Mc Adams, Jacksonville District, performed the aerial photo investigation in February of 2011. 3) Site Reconnaissance (not done) Access to the port area is easy. Access to each individual facility is controlled, 4) Interviews (not done), 5) Report. The database records review, aerial photography study, site reconnaissance, and interviews, are intended to be used in concert with each other. The project site is located at the Port Everglades and is managed by Port Everglades Port Authority, Ft. Lauderdale. No upland areas are currently planned for disposal of dredged material.

reconnaissance as the areas are all open water.

1.3 SITE DESCRIPTION

1.3.1 Vegetation The site aerial photo reconnaissance and review revealed submerged aquatic vegetation and fringe mangroves. No distressed vegetation is visible.

1.3.2 Soils The project area has subsurface sandy soils typical of Broward County.

1.3.3 Location and Legal Description. Port Everglades Draft Tentatively Selected Plan [Plan 2E(cs)] Description

At this phase of planning, a draft Tentatively Selected Plan (TSP) for Port Everglades currently consists of the following navigation improvements pending review and approval by USACE South Atlantic Division and Headquarters for public release. As shown in the attached figure the draft TSP [Plan 2E cs (container ship)] of improvement includes: deepen and widen the Outer Entrance Channel (OEC) from an existing 45-foot project depth over a 500-foot channel width to 57 feet by 800 feet and extend 2,200 feet seaward; deepen the Inner Entrance Channel (IEC) from 42 feet to 50 feet; deepen ship simulator-optimized portion of the Main Turning Basin (MTB) from 42 feet to 50 feet; widen the rectangular shoal region to the southeast of the MTB (Widener) by about 300 feet and deepen to 50 feet; widen the South Access Channel (SAC) in the proximity of berths 23 to 26, referred to as the knuckle, by about 250 feet and relocate the USCG facility easterly on USCG property; shift the existing 400-foot wide SAC about 65 feet to the east from approximately berth 26 to the south end of berth 29 to provide a transition back to the existing Federal channel limits; deepen the Southport Access Channel (SAC) from about berth 23 to the south end of berth 32 from 42 feet to 50 feet; deepen the Turning Notch (TN), including Sponsor expanded portion from 42 feet to 50 feet with an additional 100-foot widening parallel to the channel on the eastern edge of the SAC over a length of about 1,845 feet and widen the western edge of the SAC for access to the TN from the existing Federal channel edge near the south end of berth 29 to a width of about 130 feet at the north edge of the TN.

The Port's 20-year Master/Vision Plan agreement with the Florida Department of Environmental Protection (FDEP) includes expansion of the Turning Notch to increase berth capacity. This 400 foot expansion includes the release of approximately 8.68 acres west of the Turning Notch from the existing 48.27-acre conservation easement, and deepening the entire notch to 42 feet MLLW. The notch expansion is considered a future without project condition, and is the sole responsibility of the sponsor, the Port Authority. The dredging sites are located on Everglades Port Authority property or State Sovereign Submerged Lands or Federal Channel Sovereignty lands for the existing channels as shown in plate A1.

The Port's 20-year Master/Vision Plan agreement with the Florida Department of Environmental Protection (FDEP) includes expansion of the Turning Notch to increase berth capacity. *This 400 foot expansion includes the release of approximately 8.68 acres west of the Turning Notch from the existing 48.27-acre conservation easement, and deepening the entire notch to 42 feet MLLW. The notch expansion is considered a future without project condition, and is the sole responsibility of the sponsor, the Port Authority.*

1.3.4 Descriptions of Structures, Roads, Other Improvements on the Site (including Heating Cooling system, sewage disposal, source of potable water) The areas to be dredged are located within Port Everglades. The property boundary includes adjacent industrial operations, port facilities and natural vegetation. The aerial photograph shows the proposed disposal sites and other port structures. See plates A2 and A3.

1.3.5 Information (if any) Reported by Auditor Regarding Environmental Liens or Specialized Knowledge or Experience. No work was done on this as the Port Area is managed by the Port Authority.

1.3.6 Current Uses of the Property. The entire basin is a fully functional Port area with Cruise ships, oil cargo vessels, and other minor ship traffic. The South Florida ports are frequently the first ports of call for global container services transiting the Panamax Canal. It is expected that the expansion of the Canal about 2015 will lead to an influx of modern Post-Panamax container vessels calling the East Coast U.S. (ECUS) shifting from the current maximum Panamax with about 5,000 TEU capacity. This cargo will not be handled through other ports because of the extensive land distances (Savannah and Jacksonville) or the regional ports are not called directly by worldwide global services (Tampa/Canaveral/Mobile, etc.) Expected modest growth in Port Everglades container traffic, the return of some global services lost during the recent recession, and a partial shift in the global east-west Panamax fleet to Post- Panamax will affect the number and size of benefiting container vessels projected to call the Port.

1.3.7 Past Uses of the Property (to the extent identified). The past uses of the port are the same as the current use. Since this is not an upland site this is N/A. See Historical uses Location Map Figure A2

1.3.8 Current and Past Uses of Adjoining Properties (to the extent identified) By all indications observed throughout the site investigation, the adjoining properties relate to port operations. The dredging sites are surrounded by parking lots, roads, a metal recycler, etc. Historical uses Location Map Figure A2

1.3.9 Site Rendering, Map, or Site Plan See Figures A1, A2 and A3.

1.4 RECORDS REVIEW

1.4.1 Standard Environmental Records Sources, Federal, State, and/or Local. Several database searches were performed and the results were plotted to the proposed area project map. Appendix A4 shows these potentially contaminated sources. The following databases were included in this review; National and State Priority Listed Sites, Federal and State Conservation Environmental Restoration Comprehensive Liability Act (CERCLA) listed sites

1.4.2 Physical Setting Source(s) The Project details and Location Map figure A1 indicates that the dredging sites are located within the developed seaport operation area.

1.4.3 Historical Use Information Is provided on the included layout map Historical uses Location Map Figure A2

:

1.4.4 Additional Record Sources None

1.5 INFORMATION FROM SITE AERIAL RECONNAISSANCE AND INTERVIEWS.

1.5.1 Hazardous Substances in Connection with Identified Uses (including storage, handling, disposal) Port Everglades Harbor is a major terminal for petroleum products. It also handles large volumes of aggregate rock, gypsum, concrete components like sand and gravel, lumber, textiles and vegetables (Source Waterborne Commerce of the United States). It is also a large cruise ship port serving the Bahamas. The following sources were consulted for information on spills of hazardous materials in Port Everglades Harbor: the CERCLIS Database Superfund Information Systems US EPA Public Access Database, the USCG National Response Center Database. **The USCG will periodically be contacted to assess whether their database has additional information.** Storage of hazardous and toxic materials (HTW) is primarily confined to petroleum product including #2 fuel oil, diesel fuel, gasoline and lubricants. All of the HTW confinement areas are sufficient to contain any spills. Port Everglades Harbor is hydraulically linked to the Atlantic through the Port Everglades Entrance Channel.

1.5.2 Hazardous Substance Containers and Unidentified Substance Containers (including storage, handling, disposal) This item is N/A.

1.5.3 Storage Tanks (including contents and assessment of leakage or potential for' leakage) There is a huge assembly of numerous aboveground storage tanks (AST) within the Port area. Each AST in the area is managed according to modern standards for ASTs. Spills are supposed to be reprinted.

1.5.4 Indications of PCBs (including how contained and assessment of leakage or potential for leakage) This item is N/A.

1.5.5 Indications of Solid Waste Disposal This item is N/A.

1.5.6 Physical Setting Analysis, if migrating Hazardous Substances are an issue. Migration of hazardous substances from pollution sources off-site was considered. Four "non NPL CERCLIS sites were found in the vicinity none of which appear to be close enough to have ever impacted the basin

1.5.7 Any Other Conditions of Concern None

1.6 FINDINGS AND CONCLUSIONS

We have performed a Phase I Environmental Site Assessment in conformance with the scope and limitations of ASTM Practice E 1527; of the Port Everglades new deepening dredging areas and disposal sites, Broward County, Florida. These sites have been assessed and found to be no more contaminated than most Port Areas in constant use. Spill database results over the years have indicated periodic small petroleum spills in the basin but no large spills. Additionally bioassays and chemical data generated to determine the feasibility for disposal of the material in the Ocean Dredged Material Disposal site have

PRELIMINARY ASSESSMENT SCREENING (PAS)

STATEMENT OF FINDINGS

REAL PROPERTY TRANSACTION: A preliminary site assessment was conducted on located at Port Everglades for the potential use of the site for maintenance dredged material disposal.

SUMMARY:

COMPREHENSIVE RECORD SEARCH: A comprehensive record search January and February of 2011 consisted of a study of aerial photographs, and reviewing Federal and State hazardous and toxic waste databases. The aerial photography showed port loading and unloading operations.

SITE INVESTIGATION: We have performed a Phase I Environmental Site Assessment in conformance with the scope and limitations of ASTM Practice E 1527; of the Port Everglades deepening site, Broward County Florida. The area is predominantly adjacent to unloading facilities, petroleum product storage areas, and an industrial area.

In conclusion, the proposed deepening shows no obvious seepage groundwater effects, or surface water effects from contamination issues

Signed:

Date:

Prepared by: James J. Mc Adams Supv Environmental Engineer, US Army Corps of Engineers

Signed:

Date:

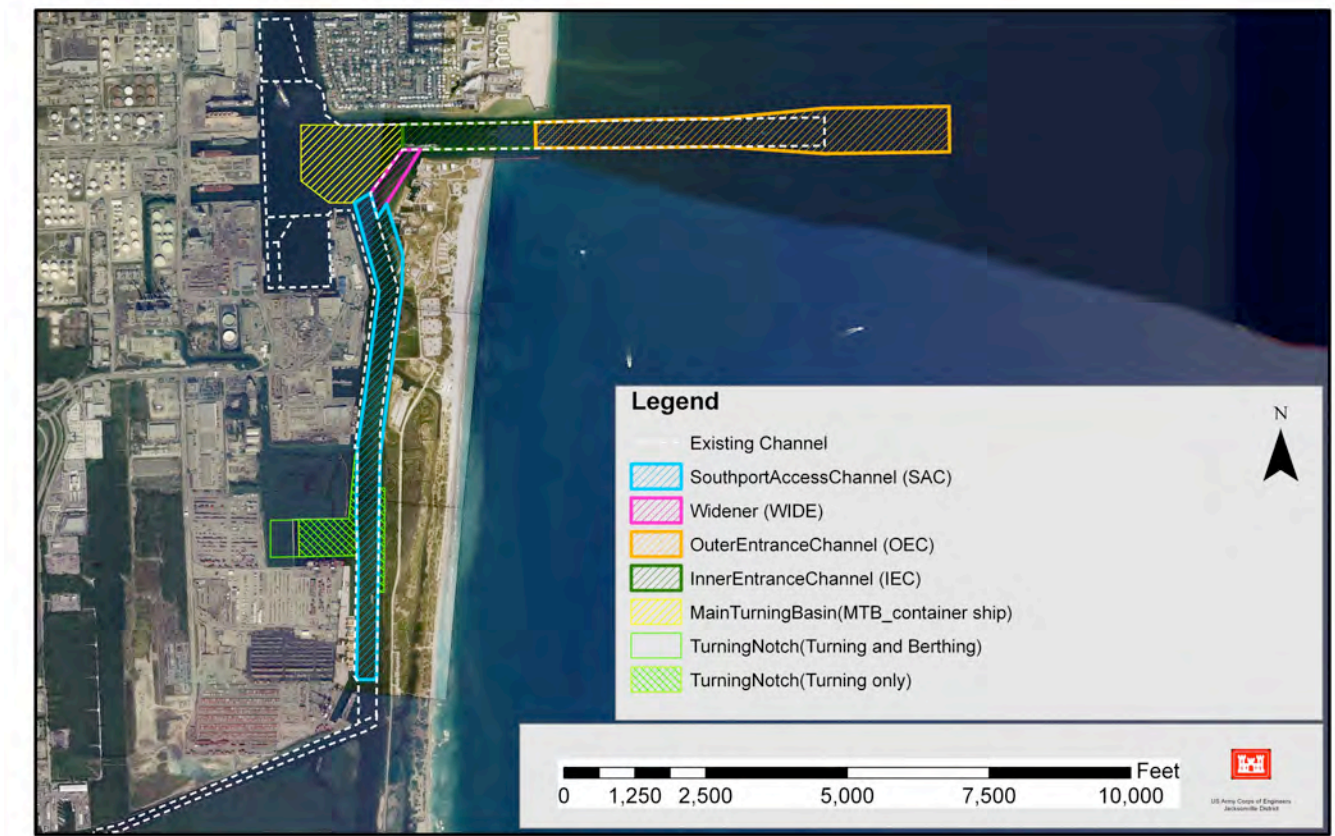
Reviewed by: J. J. McAdams, P. E. Chief, Water Quality and Compliance Branch Env. Quality Section, US Army Corps of Engineers

Signed:

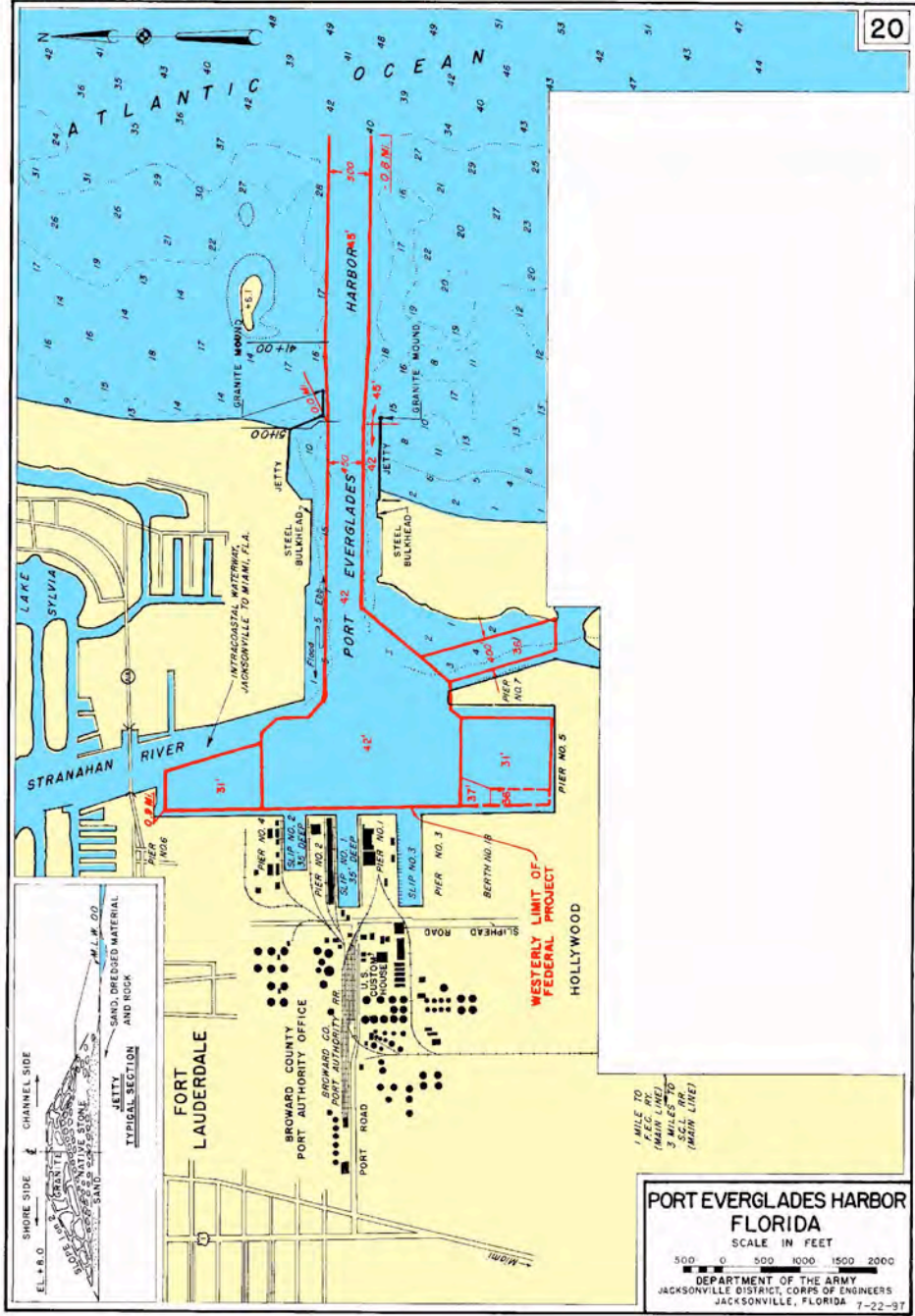
Date: Approved by: Eric Summa Chief Environmental branch, US Army Corps of Engineers

I.7 APPENDICES

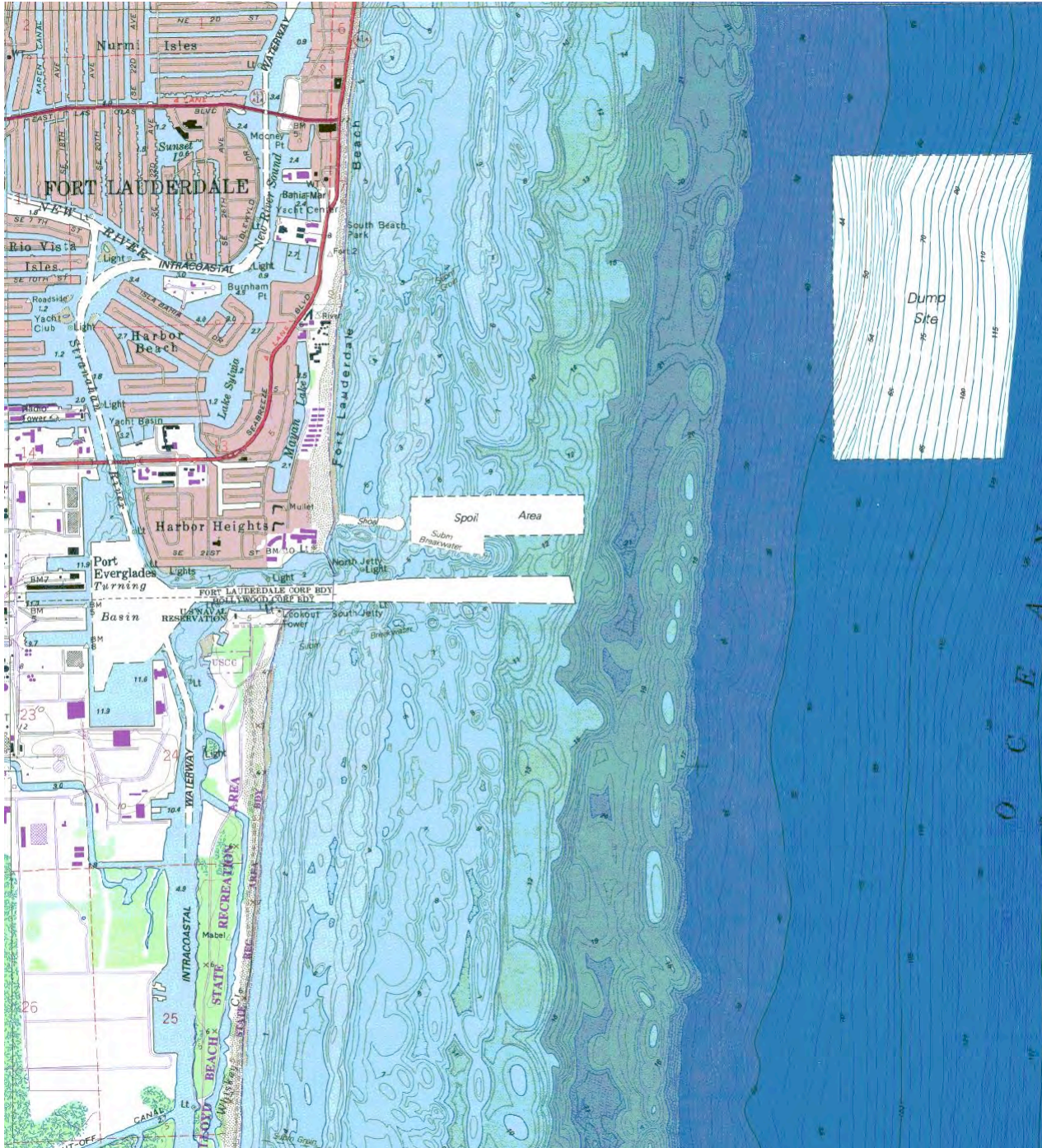
Figures



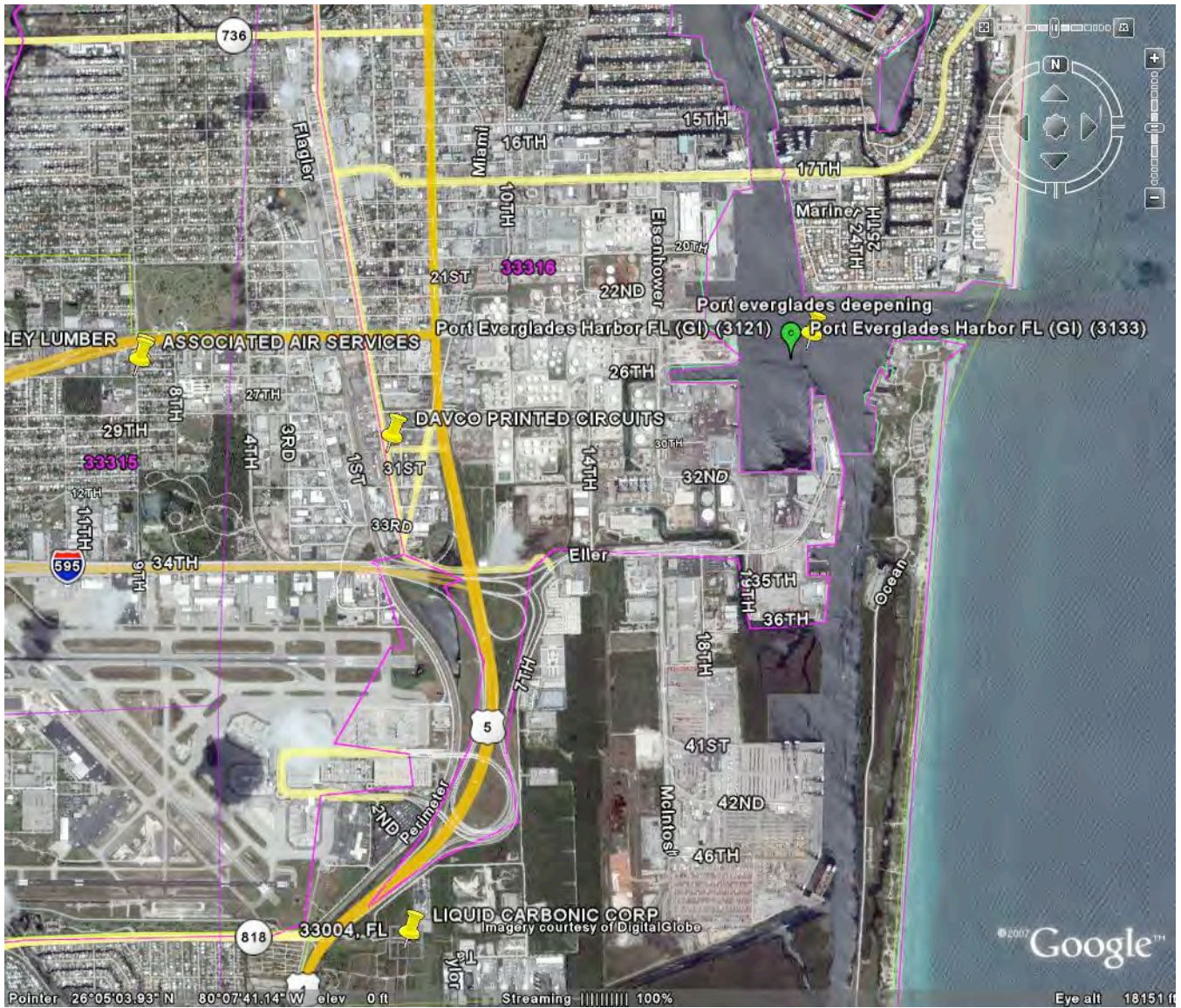
Project details and Location Map..... Figure



Historical uses Location Map.....Figure A2



USGS Quadrangle..... Figure A3



Non NPL CERCLIS. Site Location Map.....Figure A4

NPL Sites Database Results within nearby zip codes.

Site Name: DAVCO PRINTED CIRCUITS

Street: 3000 SOUTH ANDREWS AVE.

City / State / ZIP: FT. LAUDERDALE, FL 33316

NPL Status: Not on the NPL

Non-NPL Status: NFRAP-Site does not qualify for the NPL based on existing information

EPA ID: FLD133040931

EPA Region: 04

County: BROWARD

Site Name: ASSOCIATED AIR SERVICES

Street: 701 SW 48TH ST

City / State / ZIP: FORT LAUDERDALE, FL 33315

NPL Status: Not on the NPL

Non-NPL Status: NFRAP-Site does not qualify for the NPL based on existing information

EPA ID: FLD046024121

EPA Region: 04

County: BROWARD

Site Name: LINDSLEY LUMBER

Street: 1940 GRIFFIN ROAD

City / State / ZIP: DANIA, FL 33004

NPL Status: Not on the NPL

Non-NPL Status: Other Cleanup Activity: Private Party-Lead Cleanup

ERS Exclusion: An Eligible Response Site (ERS) Exclusion decision has been made at this site.

EPA ID: FLD984171546

EPA Region: 04

County: BROWARD

Site: LIQUID CARBONIC CORP

Street: 2910 STERLING RD

City / DANIA, FL 33004
State /
ZIP:

NPL Not on the NPL
Status:

Non-NPL Other Cleanup Activity: State-Lead Cleanup
Status:

ERS
Exclusion: An Eligible Response Site (ERS) Exclusion decision has been made at this site.

EPA ID: FLD045464377

EPA
Region: 04

County: BROWARD

USCG Reportable Spills 2007 to present

958306

INCIDENT28-OCT-2010 13:00WHILE FUELING A GENERATOR ON A VESSEL THERE WAS AN OVERFLOW OF THE FUEL TANK, DIESEL RELEASED ON TO THE DECK OF THE VESSEL AND INTO THE WATER. VESSELOPERATOR ERROR28-OCT-2010 12:20HYBUR TRADER 2019 ELLER FLPORT EVERGLADESBROWARDBROWARD COUNTY SHERIFF'S OFFICEWATEROIL: DIESEL

0943460

INCIDENT10-JUN-2010 10:03CALLER IS REPORTING AN UNKNOWN SHEEN FROM AN UNKNOWN SOURCE.UNKNOWN SHEENUNKNOWN06-JUN-2010 14:45UNKNOWN SHEEN INCIDENT 12 NM OFF COAST OF PORT EVERGLADES FLPORT EVERGLADESBROWARD WATERUNKNOWN OIL

935372

INCIDENT28-MAR-2010 17:43A HYDRAULIC LINE RUPTURED, RESULTING IN A DISCHARGE OF HYDRAULIC OIL. VESSELEQUIPMENT FAILURE28-MAR-2010 17:10PORT EVERGLADES - BERTH 7 FLPORT EVERGLADESBROWARDAHL SHIPPING COMPANYWATERHYDRAULIC OIL

924870

INCIDENT30-NOV-2009 13:06AN UNKNOWN SHEEN WAS DISCOVERED IN THE SE CORNER OF PIER 18 IN THE TURNING BASIN.UNKNOWN SHEENUNKNOWN30-NOV-2009 13:00UNKNOWN SHEEN INCIDENT FLPORT EVERGLADESBROWARD WATERUNKNOWN OIL

923610

INCIDENT15-NOV-2009 08:22CALLER REPORTED THAT YESTERDAY MORNING, THE CRUISE SHIP "OASIS OF THE SEAS" DRAINED DE-CHLORINATED WATER (LESS THAN 70 PPM) FROM A SWIMMING POOL IN ORDER TO FIX A FAULTY VALVE. THIS IS NON-COMPLAINCE WITH AN NPDES PERMIT. VESSELEQUIPMENT FAILURE14-NOV-2009 10:00TERMINAL 18 FLPORT EVERGLADESBROWARDROYAL CARIBBEAN CRUISES LIMITEDWATERDE-CHLORINATED WATER (SWIMMING POOL WATER)

INCIDENT22-JUN-2009 20:43CALLER IS REPORTING A DISCHARGE OF HYDRAULIC OIL FROM THE WENCH MOTOR (LIKE AN O-RING) ONBOARD THE VESSEL DUE TO AN EQUIPMENT FAILURE. TIME OF INCIDENT: 2015 EDT.VESSELEQUIPMENT FAILURE22-JUN-2009 20:15BERTH 13, AT THE PORT EVERGLADES (PETROLEUM DOCK / HARBOR) FLPORT EVERGLADESBROWARDOSG AMERICAWATERHYDRAULIC OIL

908817

INCIDENT17-JUN-2009 08:30CALLER IS REPORTING AN UNKNOWN SHEEN AROUND THE BOW OF THEIR VESSEL (CARNIVAL SUN) FROM AN UNKNOWN SOURCE.UNKNOWN SHEENUNKNOWN17-JUN-2009 08:30PIER 1 FLPORT EVERGLADESBROWARDDISCOVERY CRUISES LINESWATERUNKNOWN OIL

908689

INCIDENT16-JUN-2009 07:15CALLER STATED A PIPE BROKE INSIDE OF THE CAR DECK ON THE M/V CARNIVAL SUN. CALLER STATED WHEN THEY CLOSED THE VALVE ON THE DECK, MATERIAL RELEASED INTO THE WATER.VESSELEQUIPMENT FAILURE16-JUN-2009 01:00PIER #1 FLPORT EVERGLADESBROWARDDISCOVERY CRUISE LINESWATERHYDRAULIC OIL

907789

INCIDENT06-JUN-2009 15:59CALLER IS REPORTING A DISCHARGE OF 3 LITERS OF HYDRAULIC FLUID INTO THE WATER DUE TO RAMP FAILURE.VESSELEQUIPMENT FAILURE06-JUN-2009 15:45 PORT EVERGLADES BERTH #33 FLPORT EVERGLADESBROWARDCROWLEY M/V CROWLEY SHIPPERWATERHYDRAULIC OIL

902026

INCIDENT07-APR-2009 10:54CALLER IS REPORTING AN UNKNOWN SHEEN THAT APPEARS TO BE COMING FROM THE NORTH. THERE IS A SHIP IN THE VICINITY BUT IT IS NOT THE SOURCE OF THE SHEEN.UNKNOWN SHEENUNKNOWN07-APR-2009 10:20UNKNOWN SHEEN INCIDENT BERTH 5 FLPORT EVERGLADESBROWARD WATERUNKNOWN OIL

898486

INCIDENT25-FEB-2009 18:15THE CALLER IS REPORTING AN UNKNOWN SHEEN FROM AN UNKNOWN SOURCEUNKNOWN SHEENUNKNOWN25-FEB-2009 18:00UNKNOWN SHEEN INCIDENT BERTH 2 FLPORT EVERGLADESBROWARD WATERUNKNOWN OIL

889089

INCIDENT04-NOV-2008 10:16THE CALLER STATED THAT THE HYDRAULIC HOSE

FAILURE04-NOV-2008 09:45 2200 ELLER DRIVE BERTH 28 FLFORT
EVERGLADESBROWARDSEABULK TOWING INTERNATIONAL INC.WATERHYDRAULIC OIL

887788

INCIDENT21-OCT-2008 13:38CALLER IS REPORTING VIA THIRD PARTY THAT AN
UNNAMED COMPANY WORKING AT A CONSTRUCTION SITE HAS SPILLED ABOUT 1 TON OF
GASOLINE FROM AN UNKNOWN SOURCE ONTO THE GROUND AND INTO PORT EVERGLADE
WATERS. COMPANY IS CURRENTLY DIGGING HOLES INTO THE GROUND TO COVER UP THE
SPILL.FIXEDUNKNOWN21-OCT-2008 13:30S.E. 26TH STREET AND S.E. 14TH AVENUE FLPORT
EVERGLADESBROWARD WATERGASOLINE: AUTOMOTIVE (UNLEADED)

873784

INCIDENT11-JUN-2008 11:09ON THE VESSEL THE CAJA DUCHESS, A HYDRAULIC LINE
BURST ON DECK AND SPRAYED HYDRAULIC OIL OUTWARD FROM STARBOARD SIDE OF
VESSEL INTO THE WATER AND ONTO THE DOCK. THEY ARE IN THE PROCESS OF CLEANING
IT UP.VESSELEQUIPMENT FAILURE11-JUN-2008 10:55BERTH 29 FLPORT
EVERGLADESBROWARD WATERHYDRAULIC OIL

866075

INCIDENT26-MAR-2008 11:27CALLER IS REPORTING A DISCHARGE OF OIL FROM THE
PORT STABILIZER DUE TO EQUIPMENT FAILURE. THIS WAS DISCOVERED WHILE DIVERS
WERE DOWN PERFORMING A SURVEY.VESSELEQUIPMENT FAILURE26-MAR-2008 11:15
BERTH 6 FLPORT EVERGLADESBROWARDAERION MARINENWATERHYDRAULIC OIL

855333

INCIDENT23-NOV-2007 15:43CALLER IS REPORTING A DISCHARGE OF OILY WATER
FROM A SQUARE AIR VENT ON THE VESSEL DUE TO A BURP CAUSED BY UNKNOWN
REASONS.VESSELOTHER23-NOV-2007 14:30BERTH 5 FLPORT
EVERGLADESBROWARDANGLO EASTERNWATEROILY WATER

855322

INCIDENT23-NOV-2007 13:37CALLER IS REPORTING A DISCHARGE OF LUBRICATING
OIL FROM AN AIR COMPRESSOR ON A VESSEL DUE TO UNKNOWN
CAUSES.VESSELUNKNOWN23-NOV-2007 13:05ATLANTIC OCEAN FLPORT
EVERGLADESBROWARDDOCK WISE SHIPPING M/V SUPER SERVANT IIIWATEROIL, MISC:

INCIDENT18-SEP-2007 08:52CALLER IS REPORTING A DISCHARGE OF UNKNOWN OIL FROM TUG BOAT FIRE PUMP DUE TO UNKNOWN CAUSES.VESSELUNKNOWN18-SEP-2007 08:48PIER 24 FLPORT EVERGLADESBROWARDSEABULK TOWINGWATERUNKNOWN OIL

843369

INCIDENT25-JUL-2007 21:53CALLER IS REPORTING A DISCHARGE OF NO.6 FUEL OIL FROM A FUEL OIL HEATER UNDER A BOILER DUE TO A VALVE FAILURE. THE CAUSE OF THE VALVE FAILURE IS NOT EXACTLY KNOWN AT THIS TIME. THE DISCHARGE WENT ONTO THE FLOOR, DRAINS AND AN A INTAKE CANAL. THE CALLER THOUGHT THEY SECURED THE RELEASE BUT DUE TO FINDING A SHEEN IN THEIR INTAKE CANAL THEY THINK THERE MAY STILL BE A LEAK SOMEWHERE. CONTRACTORS HAVE BEEN HIRED.FIXEDEQUIPMENT FAILURE25-JUL-2007 21:45POWER PLANT PORT EVERGLADES POWER PLANT 8100 EISENHOWER BLVD FLPORT EVERGLADESBROWARDFLORIDA POWER AND LIGHTWATEROIL: DIESEL

839832

INCIDENT25-JUN-2007 07:44CALLER CALLER STATED THERE AN OIL SHEEN NEAR THEIR CONTAINER VESSEL FROM UNKNOWN SOURCES. CALLER STATED THEY NOTICED THIS SHEEN JUST BEFORE THEY WERE ABOUT TO BUNKER.UNKNOWN SHEENUNKNOWN25-JUN-2007 07:30UNKNOWN SHEEN INCIDENT PORT EVERGLADES PIER 19 FLPORT EVERGLADESBROWARD WATERUNKNOWN OIL

832426

INCIDENT16-APR-2007 18:30THE CALLER STATES THAT THE THRUSTERS ON THE VESSEL ARE LEAKING. THE CALLER STATED THAT THE LEAK WAS DISCOVERED ON THURSDAY OF LAST WEEK. THE CALLER IS UNSURE OF THE CAUSE OF THE LEAK.VESSELUNKNOWN08-APR-2007 14:00PIER 19 FLPORT EVERGLADESBROWARDCARNIVAL LIBERTYWATEROIL, MISC: LUBRICATING

825564

INCIDENT05-FEB-2007 14:02CALLER IS CALLING ON BEHALF OF THE BROWARD COUNTY FIRE DEPARTMENT. FIRE DEPARTMENT DISCOVERED AN UNKNOWN SHEEN FROM AN FROM AN UNKNOWN SOURCE.UNKNOWN SHEENUNKNOWN05-FEB-2007 13:52UNKNOWN SHEEN INCIDENT BERTH 2 & 4A FLPORT EVERGLADESBROWARD WATERUNKNOWN OIL

822042

14:30 PIER 21 FLPORT EVERGLADESBROWARD CARNIVAL CRUISE LINE (CARNIVAL LEGEND) WATERPAINT

818377 INCIDENT 16-NOV-2006 12:16 CALLER IS REPORTING AN UNKNOWN SHEEN. UNKNOWN SHEEN UNKNOWN 16-NOV-2006 12:16 PORT EVERGLADES, PIER 21 ON THE WESTSIDE OF 2700 EAST SUNRISE BLVD. FLPORT VERGLADESBROWARD WATER UNKNOWN OIL.

809368

INCIDENT 27-AUG-2006 17:16 THE CALLER IS REPORTING A UNKNOWN SHEEN SIGHTING IN THE ICW. UNKNOWN SHEEN UNKNOWN 27-AUG-2006 16:24 BERTH 13 FLPORT EVERGLADESBROWARD WATER PETROLEUM

805245

INCIDENT 23-JUL-2006 19:32 REPORTING A POTENTIAL RELEASE OF MATERIALS INTO ATLANTIC OCEAN FROM TWO 70 KILO BOTTLES THAT FELL OFF A CRANE AT THE PORT DUE TO OPERATOR ERROR. FIXED OPERATOR ERROR 23-JUL-2006 18:20 PORT EVERGLADES BERTH # 5 FLPORT EVERGLADESBROWARD WATER OXYGEN

805245

INCIDENT 23-JUL-2006 19:32 REPORTING A POTENTIAL RELEASE OF MATERIALS INTO ATLANTIC OCEAN FROM TWO 70 KILO BOTTLES THAT FELL OFF A CRANE AT THE PORT DUE TO OPERATOR ERROR. FIXED OPERATOR ERROR 23-JUL-2006 18:20 PORT EVERGLADES BERTH # 5 FLPORT EVERGLADESBROWARD WATER ACETLYNE

804057

INCIDENT 13-JUL-2006 18:21 CALLER REPORTING A LUBE OIL SPILL DUE TO UNKNOWN CAUSES AND SOURCES. VESSEL UNKNOWN 13-JUL-2006 17:00 PORT EVERGLADES FLPORT EVERGLADESBROWARD PRECIOUS SHIPPING WATER OIL, MISC: LUBRICATING

804010

INCIDENT 13-JUL-2006 14:54 REPORTING A RELEASE OF MATERIALS INTO THE ATLANTIC OCEAN FROM A VESSEL DUE TO UNKNOWN CAUSES. VESSEL UNKNOWN 13-JUL-2006 14:45 BERTH # 5 FTS SOUTH PORT CONTAINER YARD FLPORT EVERGLADESBROWARD PRECIOUS SHIPPING AGENCY WATER STEEL

798235

INCIDENT 23-MAY-2006 19:18 THE CALLER STATES THAT SOMEONE SAW FUEL SPILLING INTO THE ICW FROM HIS VESSEL. THE CAUSE IS UNKNOWN AND THE CALLER SAYS HE DOES NOT THINK THE FUEL IS COMING FROM HIS

REPORTING A SHEEN FROM AN UNKNOWN ORIGIN.UNKNOWN
SHEENUNKNOWN17-APR-2006 12:15BERTH 5 FLPORT
EVERGLADESBROWARD WATERUNKNOWN OIL

790611

INCIDENT12-MAR-2006 08:33REPORTING A RELEASE OF MATERIALS FROM A
COOLING WATER PUMP BLOWING BLACK SMOKE OUT DURING LOADING CARGO FROM
THE EXHAUST LEAVING A FILM IN PORT EVERGLADES HARBOR FROM A
VESSEL.VESSELUNKNOWN12-MAR-2006 07:05BERTH 13 BETWEEN THE SIDE OF SHIP AND
THE PIER FLPORT EVERGLADESBROWARDODFJOLL ASAWATERSOOT

785368

INCIDENT16-JAN-2006 18:14THE MATERIAL RELEASED FROM A 10 INCH
LOW-PRESSURE PIPELINE DUE TO "NITROGEN TESTING".PIPELINEOTHER16-JAN-2006 18:05
S.E. 28TH ST. FLPORT EVERGLADESBROWARDEVERGLADES PIPELINE COWATERMIXTURE
OF NITROGEN AND TURBINE FUEL

958306

INCIDENT28-OCT-2010 13:00WHILE FUELING A GENERATOR ON A VESSEL THERE
WAS AN OVERFLOW OF THE FUEL TANK, DIESEL RELEASED ON TO THE DECK OF THE
VESSEL AND INTO THE WATER.VESSELOPERATOR ERROR28-OCT-2010 12:20HYBUR TRADER
2019 ELLER FLPORT EVERGLADESBROWARDBROWARD COUNTY SHERIFF'S
OFFICEWATEROIL: DIESEL

943460

INCIDENT10-JUN-2010 10:03CALLER IS REPORTING AN UNKNOWN SHEEN FROM AN
UNKNOWN SOURCE.UNKNOWN SHEENUNKNOWN06-JUN-2010 14:45UNKNOWN SHEEN
INCIDENT 12 NM OFF COAST OF PORT EVERGLADES FLPORT
EVERGLADESBROWARD WATERUNKNOWN OIL

935372

INCIDENT28-MAR-2010 17:43A HYDRAULIC LINE RUPTURED, RESULTING IN A
DISCHARGE OF HYDRAULIC OIL.VESSELEQUIPMENT FAILURE28-MAR-2010 17:10PORT
EVERGLADES - BERTH 7 FLPORT EVERGLADESBROWARDAHL SHIPPING
COMPANYWATERHYDRAULIC OIL

INCIDENT30-NOV-2009 13:06AN UNKNOWN SHEEN WAS DISCOVERED IN THE SE CORNER OF PIER 18 IN THE TURNING BASIN.UNKNOWN SHEENUNKNOWN30-NOV-2009 13:00UNKNOWN SHEEN INCIDENT FLPORT EVERGLADESBROWARD WATERUNKNOWN OIL

923610

INCIDENT15-NOV-2009 08:22CALLER REPORTED THAT YESTERDAY MORNING, THE CRUISE SHIP "OASIS OF THE SEAS" DRAINED DE-CHLORINATED WATER (LESS THAN 70 PPM) FROM A SWIMMING POOL IN ORDER TO FIX A FAULTY VALVE. THIS IS NON-COMPLAINCE WITH AN NPDES PERMIT. VESSELEQUIPMENT FAILURE14-NOV-2009 10:00TERMINAL 18 FLPORT EVERGLADESBROWARDROYAL CARIBBEAN CRUISES LIMITEDWATERDE-CHLORINATED WATER (SWIMMING POOL WATER)

909408

INCIDENT22-JUN-2009 20:43CALLER IS REPORTING A DISCHARGE OF HYDRAULIC OIL FROM THE WENCH MOTOR (LIKE AN O-RING) ONBOARD THE VESSEL DUE TO AN EQUIPMENT FAILURE. TIME OF INCIDENT: 2015 EDT.VESSELEQUIPMENT FAILURE22-JUN-2009 20:15BERTH 13, AT THE PORT EVERGLADES (PETROLEUM DOCK / HARBOR) FLPORT EVERGLADESBROWARDOSG AMERICAWATERHYDRAULIC OIL

908817

INCIDENT17-JUN-2009 08:30CALLER IS REPORTING AN UNKNOWN SHEEN AROUND THE BOW OF THEIR VESSEL (CARNIVAL SUN) FROM AN UNKNOWN SOURCE.UNKNOWN SHEENUNKNOWN17-JUN-2009 08:30PIER 1 FLPORT EVERGLADESBROWARDDISCOVERY CRUISES LINESWATERUNKNOWN OIL

908689

INCIDENT16-JUN-2009 07:15CALLER STATED A PIPE BROKE INSIDE OF THE CAR DECK ON THE M/V CARNIVAL SUN. CALLER STATED WHEN THEY CLOSED THE VALVE ON THE DECK, MATERIAL RELEASED INTO THE WATER.VESSELEQUIPMENT FAILURE16-JUN-2009 01:00PIER #1 FLPORT EVERGLADESBROWARDDISCOVERY CRUISE LINESWATERHYDRAULIC OIL907789INCIDENT06-JUN-2009 15:59CALLER IS REPORTING A DISCHARGE OF 3 LITERS OF HYDRAULIC FLUID INTO THE WATER DUE TO RAMP FAILURE.VESSELEQUIPMENT FAILURE06-JUN-2009 15:45 PORT EVERGLADES BERTH #33 FLPORT EVERGLADESBROWARDCROWLEY M/V CROWLEY SHIPPERWATERHYDRAULIC OIL

INCIDENT07-APR-2009 10:54CALLER IS REPORTING AN UNKNOWN SHEEN THAT APPEARS TO BE COMING FROM THE NORTH. THERE IS A SHIP IN THE VICINITY BUT IT IS NOT THE SOURCE OF THE SHEEN.UNKNOWN SHEENUNKNOWN07-APR-2009 10:20UNKNOWN SHEEN INCIDENT BERTH 5 FLPORT EVERGLADESBROWARD WATERUNKNOWN OIL

898486

INCIDENT25-FEB-2009 18:15THE CALLER IS REPORTING AN UNKNOWN SHEEN FROM AN UNKNOWN SOURCEUNKNOWN SHEENUNKNOWN25-FEB-2009 18:00UNKNOWN SHEEN INCIDENT BERTH 2 FLPORT EVERGLADESBROWARD WATERUNKNOWN OIL

889089

INCIDENT04-NOV-2008 10:16THE CALLER STATED THAT THE HYDRAULIC HOSE FAILED DURING REPAIRS AND MAY HAVE BEEN UNDER TEST PRESSURE. BOOMS AND ABSORBANTS HAVE BEEN DEPLOYED FOR CLEANUP.VESSELEQUIPMENT FAILURE04-NOV-2008 09:45 2200 ELLER DRIVE BERTH 28 FLFORT EVERGLADESBROWARDSEABULK TOWING INTERNATIONAL INC.WATERHYDRAULIC OIL

887788

INCIDENT21-OCT-2008 13:38CALLER IS REPORTING VIA THIRD PARTY THAT AN UNNAMED COMPANY WORKING AT A CONSTRUCTION SITE HAS SPILLED ABOUT 1 TON OF GASOLINE FROM AN UNKNOWN SOURCE ONTO THE GROUND AND INTO PORT EVERGLADE WATERS. COMPANY IS CURRENTLY DIGGING HOLES INTO THE GROUND TO COVER UP THE SPILL.FIXEDUNKNOWN21-OCT-2008 13:30S.E. 26TH STREET AND S.E. 14TH AVENUE FLPORT EVERGLADESBROWARD WATERGASOLINE: AUTOMOTIVE (UNLEADED)

873784

INCIDENT11-JUN-2008 11:09ON THE VESSEL THE CAJA DUCHESS, A HYDRAULIC LINE BURST ON DECK AND SPRAYED HYDRAULIC OIL OUTWARD FROM STARBOARD SIDE OF VESSEL INTO THE WATER AND ONTO THE DOCK. THEY ARE IN THE PROCESS OF CLEANING IT UP.VESSELEQUIPMENT FAILURE11-JUN-2008 10:55BERTH 29 FLPORT EVERGLADESBROWARD WATERHYDRAULIC OIL

866075

INCIDENT26-MAR-2008 11:27CALLER IS REPORTING A DISCHARGE OF OIL FROM THE PORT STABILIZER DUE TO EQUIPMENT FAILURE. THIS WAS DISCOVERED WHILE DIVERS WERE DOWN PERFORMING A SURVEY.VESSELEQUIPMENT FAILURE26-MAR-2008 11:15 BERTH 6 FLPORT EVERGLADESBROWARDAERION MARINEWATERHYDRAULIC OIL

855333

INCIDENT23-NOV-2007 15:43CALLER IS REPORTING A DISCHARGE OF OIL Y WATER

REASONS.VESSELOther23-NOV-2007 14:30BERTH 5 FLPORT
EVERGLADESBROWARDANGLO EASTERNWATEROILY WATER

855322

INCIDENT23-NOV-2007 13:37CALLER IS REPORTING A DISCHARGE OF LUBRICATING
OIL FROM AN AIR COMPRESSOR ON A VESSEL DUE TO UNKNOWN
CAUSES.VESSELUNKNOWN23-NOV-2007 13:05ATLANTIC OCEAN FLPORT
EVERGLADESBROWARDDOCK WISE SHIPPING M/V SUPER SERVANT IIIWATEROIL, MISC:
LUBRICATING

849134

INCIDENT18-SEP-2007 08:52CALLER IS REPORTING A DISCHARGE OF UNKNOWN OIL
FROM TUG BOAT FIRE PUMP DUE TO UNKNOWN CAUSES.VESSELUNKNOWN18-SEP-2007
08:48PIER 24 FLPORT EVERGLADESBROWARDSEABULK TOWINGWATERUNKNOWN OIL

843369

INCIDENT25-JUL-2007 21:53CALLER IS REPORTING A DISCHARGE OF NO.6 FUEL OIL
FROM A FUEL OIL HEATER UNDER A BOILER DUE TO A VALVE FAILURE. THE CAUSE OF
THE VALVE FAILURE IS NOT EXACTLY KNOWN AT THIS TIME. THE DISCHARGE WENT
ONTO THE FLOOR, DRAINS AND AN A INTAKE CANAL. THE CALLER THOUGHT THEY
SECURED THE RELEASE BUT DUE TO FINDING A SHEEN IN THEIR INTAKE CANAL THEY
THINK THERE MAY STILL BE A LEAK SOMEWHERE. CONTRACTORS HAVE BEEN
HIRED.FIXEDEQUIPMENT FAILURE25-JUL-2007 21:45POWER PLANT PORT EVERGLADES
POWER PLANT 8100 EISENHOWER BLVD FLPORT EVERGLADESBROWARDFLORIDA POWER
AND LIGHTWATEROIL: DIESEL

839832

INCIDENT25-JUN-2007 07:44CALLER CALLER STATED THERE AN OIL SHEEN NEAR
THEIR CONTAINER VESSEL FROM UNKNOWN SOURCES. CALLER STATED THEY NOTICED
THIS SHEEN JUST BEFORE THEY WERE ABOUT TO BUNKER.UNKNOWN
SHEENUNKNOWN25-JUN-2007 07:30UNKNOWN SHEEN INCIDENT PORT EVERGLADES PIER
19 FLPORT EVERGLADESBROWARD WATERUNKNOWN OIL

832426

INCIDENT16-APR-2007 18:30THE CALLER STATES THAT THE THRUSTERS ON THE
VESSEL ARE LEAKING. THE CALLER STATED THAT THE LEAK WAS DISCOVERED ON
THURSDAY OF LAST WEEK. THE CALLER IS UNSURE OF THE CAUSE OF THE
LEAK.VESSELUNKNOWN08-APR-2007 14:00PIER 19 FLPORT
EVERGLADESBROWARDDOCK WISE SHIPPING M/V SUPER SERVANT IIIWATEROIL, MISC:
LUBRICATING

INCIDENT05-FEB-2007 14:02CALLER IS CALLING ON BEHALF OF THE BROWARD COUNTY FIRE DEPARTMENT. FIRE DEPARTMENT DISCOVERED AN UNKNOWN SHEEN FROM AN FROM AN UNKNOWN SOURCE.UNKNOWN SHEENUNKNOWN05-FEB-2007 13:52UNKNOWN SHEEN INCIDENT BERTH 2 & 4A FLPORT EVERGLADESBROWARD WATERUNKNOWN OIL

822042

INCIDENT26-DEC-2006 15:35CALLER STATED THAT DURING PAINTING OPERATIONS A FEW DROPS OF PAINT FELL INTO THE WATER.VESSELOPERATOR ERROR26-DEC-2006 14:30 PIER 21 FLPORT EVERGLADESBROWARDCARNIVAL CRUISE LINE (CARNIVAL LEGEND)WATERPAINT818377INCIDENT16-NOV-2006 12:16CALLER IS REPORTING AN UNKNOWN SHEEN.UNKNOWN SHEENUNKNOWN16-NOV-2006 12:16PORT EVERGLADES, PIER 21 ON THE WESTSIDE OF 2700 EAST SUNRISE BLVD. FLPORT EVERGLADESBROWARD WATERUNKNOWN OIL

809368

INCIDENT27-AUG-2006 17:16THE CALLER IS REPORTING A UNKNOWN SHEEN SIGHTING IN THE ICW.UNKNOWN SHEENUNKNOWN27-AUG-2006 16:24BERTH 13 FLPORT EVERGLADESBROWARD WATERPETROLEUM

805245

INCIDENT23-JUL-2006 19:32REPORTING A POTENIAL RELEASE OF MATERIALS INTO ATLANTIC OCEAN FROM TWO 70 KILO BOTTLES THAT FELL OFF A CRANE AT THE PORT DUE TO OPERATOR ERROR.FIXEDOPERATOR ERROR23-JUL-2006 18:20PORT EVERGLADES BERTH # 5 FLPORT EVERGLADESBROWARD WATERACETLYNE

805245

INCIDENT23-JUL-2006 19:32REPORTING A POTENIAL RELEASE OF MATERIALS INTO ATLANTIC OCEAN FROM TWO 70 KILO BOTTLES THAT FELL OFF A CRANE AT THE PORT DUE TO OPERATOR ERROR.FIXEDOPERATOR ERROR23-JUL-2006 18:20PORT EVERGLADES BERTH # 5 FLPORT EVERGLADESBROWARD WATEROXYGEN

804057

INCIDENT13-JUL-2006 18:21CALLER REPORTING A LUBE OIL SPILL DUE TO UNKNOWN CAUSES AND SOURCES.VESSELUNKNOWN13-JUL-2006 17:00PORT EVERGLADES

INCIDENT13-JUL-2006 14:54REPORTING A RELEASE OF MATERIALS INTO THE ATLANTIC OCEAN FROM A VESSEL DUE TO UNKNOWN CAUSES.VESSELUNKNOWN13-JUL-2006 14:45BERTH # 5 FTS SOUTH PORT CONTAINER YARD FLPORT EVERGLADESBROWARDPRECIOUS SHIPPING AGENCYWATERSTEEL

798235

INCIDENT23-MAY-2006 19:18THE CALLER STATES THAT SOMEONE SAW FUEL SPILLING INTO THE ICW FROM HIS VESSEL. THE CAUSE IS UNKNOWN AND THE CALLER SAYS HE DOES NOT THINK THE FUEL IS COMING FROM HIS VESSEL.VESSELUNKNOWN23-MAY-2006 18:30ICW, MM 32 FLPORT EVERGLADESBROWARD WATEROIL: DIESEL

794207

INCIDENT17-APR-2006 12:32CALLER IS REPORTING A SHEEN FROM AN UNKNOWN ORIGIN.UNKNOWN SHEENUNKNOWN17-APR-2006 12:15BERTH 5 FLPORT EVERGLADESBROWARD WATERUNKNOWN OIL

790611

INCIDENT12-MAR-2006 08:33REPORTING A RELEASE OF MATERIALS FROM A COOLING WATER PUMP BLOWING BLACK SMOKE OUT DURING LOADING CARGO FROM THE EXHAUST LEAVING A FILM IN PORT EVERGLADES HARBOR FROM A VESSEL.VESSELUNKNOWN12-MAR-2006 07:05BERTH 13 BETWEEN THE SIDE OF SHIP AND THE PIER FLPORT EVERGLADESBROWARDODFJOLL ASAWATERSOOT

785368

INCIDENT16-JAN-2006 18:14THE MATERIAL RELEASED FROM A 10 INCH LOW-PRESSURE PIPELINE DUE TO "NITROGEN TESTING".PIPELINEOTHER16-JAN-2006 18:05 S.E. 28TH ST. FLPORT EVERGLADESBROWARDEVERGLADES PIPELINE COWATERMIXTURE OF NITROGEN AND TURBINE FUEL