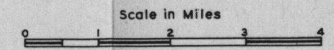


TOPOGRAPHY DEVELOPED
BY
BRAIDED STREAMS
DISSECTED ALLUVIAL PLAIN
IN THE
WESTERN LOWLANDS
NEAR
WEINER, ARKANSAS

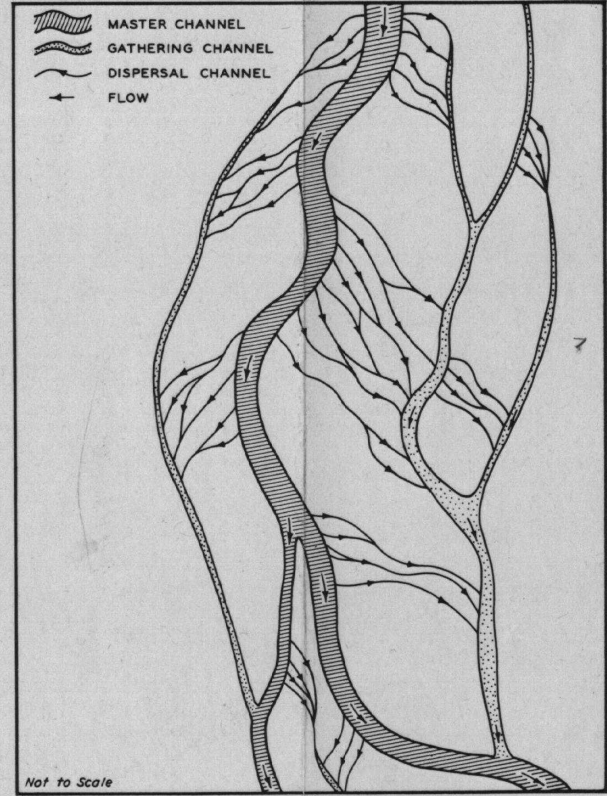
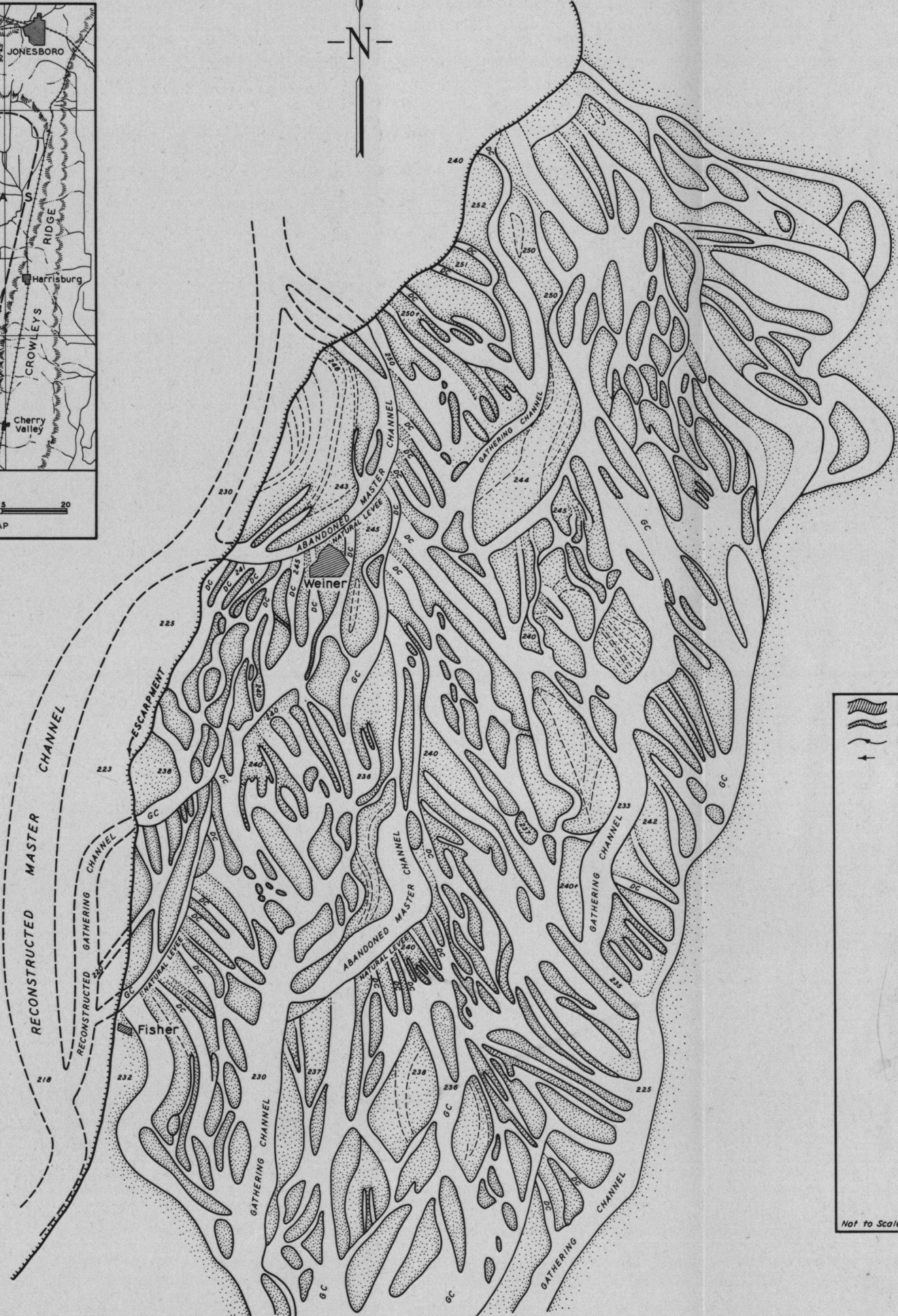


LEGEND

- GC GATHERING CHANNEL
- DC DISPERSAL CHANNEL
- 250 ELEV. IN FEET M. S. L.

TOPOGRAPHY FROM AERIAL PHOTOGRAPHS

Valley Slope Approx. 1 ft. per mile



GENERALIZED DIAGRAM
CHANNEL ELEMENTS OF BRAIDED STREAMS